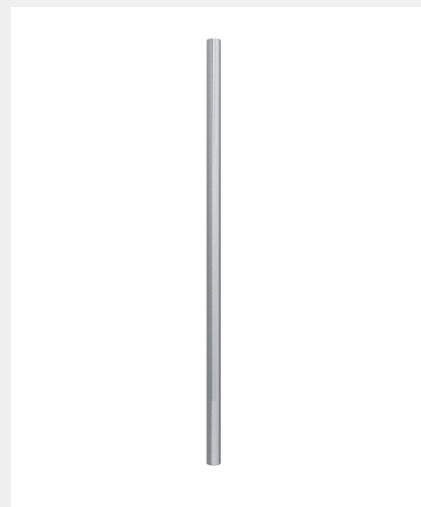


BLU RANGE

INLINE ROUND 'T' BAR PULL HANDLE

Product Code: HAB2

LIT-DC-HAB2



316 Marine Grade Stainless Steel Hardware Range

- Finest quality inline round 'T' bar pull handle
- Heavy duty 1.5mm stainless steel wall thickness for a superior feel & increased tensile strength
- Handle ends are CNC machined for a precision engineered consistent finish
- Part of a suited range of door & window hardware
- Designed with no middle stem to avoid conflicting with locking mechanism
- Manufactured from 316 Marine Grade Stainless Steel
- Ideal for use where corrosion levels are high, such as coastal environments and in acidic timber
- Lifetime guarantee

T 01726 871 025 E sales@coastal-group.com W coastal-group.com



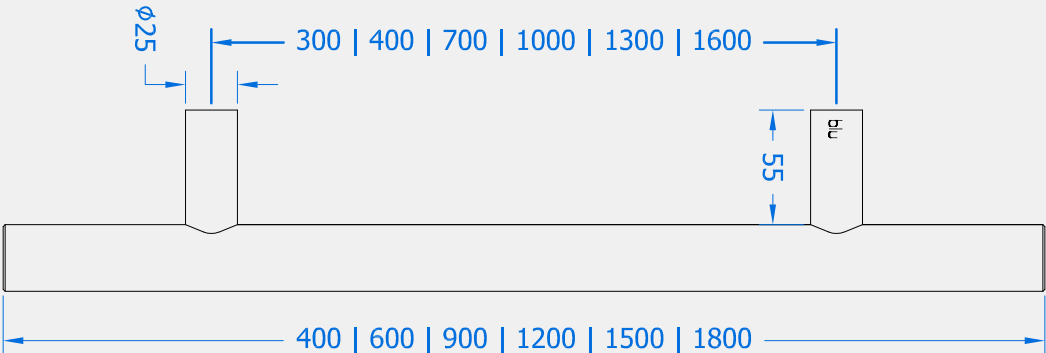
Brass bush fixing ferrules to prevent handles from coming loose



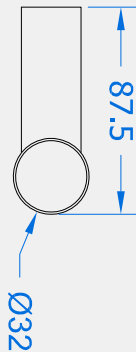
COASTAL

Shaping the future.

Side Profile



Top Profile



Visit www.coastal-group.com for CAD drawings

FINISHES:



SSS
Satin Stainless Steel



PBK
PVD Satin Black

PART NUMBER	PRODUCT DESCRIPTION	FINISH	UNITS
HAB2-400-UF-SSS	400mm 'T' bar, universal finxing	SSS	Each
HAB2-600-UF-SSS	600mm 'T' bar, universal fixing	SSS	Each
HAB2-600-UF-PBK	600mm 'T' bar, universal fixing	PBK	Each
HAB2-900-UF-SSS	900mm 'T' bar, universal fixing	SSS	Each
HAB2-900-UF-PBK	900mm 'T' bar, universal fixing	PBK	Each
HAB2-1200-UF-SSS	1200mm 'T' bar, universal fixing	SSS	Each
HAB2-1500-UF-SSS	1500mm, 'T' bar, universal fixing	SSS	Each
HAB2-1800-UF-SSS	1800mm, 'T' bar, universal fixing	SSS	Each



COASTAL
Shaping the future.