

Interactive Booklet!

Clickable product pages

timco

Made for the trade

Internal Ironmongery

Whatever the job
needs, trust
timco.



Door Locks, Latches & Catches	4-7
Nightlatches	8-9
Lever On Rose Door Handle Range	10-11
Victorian Scroll Door Handle Range	12-13
Victorian Straight Door Handle Range	14-15
Zeta Door Handle Range	16-17
Contractors Range	18-19
Contractors Latch Door Handles	20
Antique Style Handles & Pull Handles	21
Pull Handles & Door Accessories	22-23
Door Security	24-27
Intumescent Pipe Collars & Wraps	28-29
Intumescent Accessories	30-31
Fire Door Hinges	32
Door & Cabinet Hinges	33-37
Specialist Hinges	38-41
Architectural Door Accessories	42-44
Door Catches & Latches	45
Door Stops	46
Clothes & Storage Hooks	47
Furniture Fixings	48-49
Architectural Window Accessories	50-51
Product Codes	52-60



Door Locks, Latches & Catches



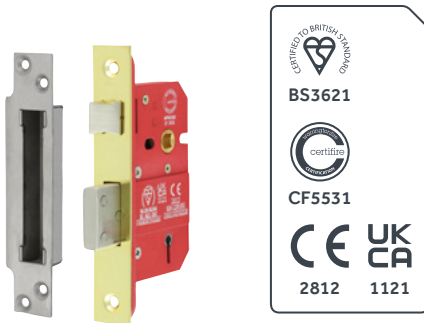
Available in:



5 Lever British Standard Sashlock

A high security mortice lock for use in interior and exterior doors in commercial and domestic environments. The heavy duty spring mechanism makes this lock ideal for sprung and unsprung door handles.

Now CE Approved



Available in Box (fixings incl.):

66mm Case / 45mm Backset - **EB** **SS**
78mm Case / 57mm Backset - **EB** **SS**

5 Lever British Standard Deadlock

A high security mortice lock for use in interior and exterior doors in commercial and domestic environments.

Now CE Approved



Available in Box (fixings incl.):

66mm Case / 45mm Backset - **EB** **SS**
78mm Case / 57mm Backset - **EB** **SS**

Euro Profile Sashlock

Ideal for medium to high security doors in domestic and commercial applications. Features a heavy duty spring and can be used with both sprung and unsprung door handles and in conjunction with a Euro profile cylinder.



• Tested to
BS EN 12209



Available in Box (fixings incl.):

66mm Case / 45mm Backset - **SN**
78mm Case / 56mm Backset - **SN**

Euro Profile Deadlock

Ideal for medium to high security doors in domestic and commercial applications. The lock is to be used in conjunction with a Euro profile cylinder.



• Tested to
BS EN 12209



Available in Box (fixings incl.):

66mm Case / 45mm Backset - **SN**
78mm Case / 56mm Backset - **SN**

3 Lever Sashlock

A medium security sashlock that is ideal for use in domestic and commercial applications. Features a medium duty spring mechanism and is recommended to be used with sprung door handles.



• Tested to
BS EN 12209



Available in Box (fixings incl.):

65mm Case / 45mm Backset - **EB** **SN**
78mm Case / 58mm Backset - **EB** **SN**

3 Lever Deadlock

A medium security deadlock that is ideal for use in domestic and commercial applications.



• Tested to
BS EN 12209



Available in Box (fixings incl.):

65mm Case / 45mm Backset - **EB** **SN**
78mm Case / 58mm Backset - **EB** **SN**

Specialist 3 Lever Sashlocks

Specialist variants of a medium security sashlock that are ideal for use in domestic and commercial applications. Featuring a medium duty spring mechanism and recommended to be used with sprung door handles.

Available in Bag (fixings incl.):
51mm Case / 31mm Backset - **SN**

Narrow backset



3 lever sashlock with a 50mm depth ideal for narrow style glazed doors.

Extra long keys



3 lever sashlock with a 64mm depth. Supplied with 2 extra long keys.

Available in Bag (fixings incl.):
65mm Case / 45mm Backset - **SN**

Bathroom Lock

A medium duty bathroom lock that is ideal for use in domestic and commercial applications. The lock features a medium duty spring and is recommended to be used with sprung door handles. The deadbolt is operated by a turn with a 5mm spindle.

- Tested to BS EN 12209

Available in Box (fixings incl.):
65mm Case / 45mm Backset - **EB SN**
78mm Case / 57mm Backset - **EB SN**



5 Lever British Standard Sashlock Rebate Kit

To be used in conjunction with our 5 Lever British Standard Sashlock. Typically used on a pair of rebated doors to offset the lock and keep faceplates.



- Made from steel

Available in Bag (fixings incl.)
To suit door rebate: 13mm - **EB SN**

3 Lever Sashlock Rebate Kit

To be used in conjunction with our 3 Lever British Standard Sashlock. Typically used on a pair of rebated doors to offset the lock and keep faceplates.



- Made from steel

Available in Bag (fixings incl.)
To suit door rebate: 13mm - **EB SN**

3 Lever Narrow Backset Sashlock Rebate Kit

To be used in conjunction with our 50mm narrow backset, 3 lever sashlock. Typically used on a pair of rebated doors to offset the lock and keep faceplates.



- Made from steel
- Only used with 50mm Narrow Backset 3 Lever Sashlock

Available in Bag (fixings incl.)
To suit door rebate: 13mm - **SN**

Tubular Latch

A medium duty tubular latch suitable for use in domestic and commercial applications. The latch should be used with sprung door furniture.



- Suitable for 30 & 60 minute fire doors
- Bolt through

Available in TIMpac & Bag (fixings incl.):
67mm Case / 45mm Backset - **EB SN**
76mm Case / 57mm Backset - **EB SN**

Architectural Tubular Latch

A heavy duty architectural pattern tubular latch for use in high use domestic and commercial applications. The latch features a heavy duty spring mechanism and can be used with sprung and unsprung door handles.



- Bolt through
- Suitable for 30 & 60 minute fire doors

Available in TIMpac & Bag (fixings incl.):
64mm Case / 45mm Backset - **ES** 103mm Case / 82.5mm Backset - **ES**
78mm Case / 57mm Backset - **ES** 128mm Case / 107.5mm Backset - **ES**

Architectural Tubular Deadbolt

A heavy duty architectural pattern tubular deadbolt for use in high use domestic and commercial applications. The deadbolt is to be used in conjunction with a bathroom turn that has a 5mm spindle.



- Bolt through

Available in TIMpac & Bag (fixings incl.):
65.5mm Case / 45mm Backset - **ES**
78mm Case / 57mm Backset - **ES**
103.5mm Case / 82.5mm Backset - **ES**
129mm Case / 108mm Backset - **ES**

Economy Tubular Latch

A simple yet reliable latch for use in domestic applications along with sprung door handles.



- Made from steel
- Bolt through
- Fixed forend

Available in Bag (fixings incl.):
67mm Case / 45mm Backset - **EB N**
79.5mm Case / 57.5mm Backset - **EB N**

Quick Fit Round Latch

Designed for easy installation, simply drill hole and push to fit, no chisel required. Suitable for use with all sprung handles.

- Tested to 100,000 cycles
- Bolt through facility



Available in Bag (fixings incl.):
67mm Case / 45mm Backset - **N**
76mm Case / 55mm Backset - **N**

Available in TIMpac (fixings incl.):
67mm Case / 45mm Backset - **N**
76mm Case / 57mm Backset - **N**

Quick Fit Round Deadbolt

Designed for easy installation, simply drill hole and push to fit, no chisel required. Suitable for use in conjunction with bathroom bolts.

- Tested to 50,000 cycles
- Bolt through facility



Available in Bag (fixings incl.):
64mm Case / 45mm Backset - **N**
76mm Case / 57mm Backset - **N**

Available in TIMpac (fixings incl.):
64mm Case / 45mm Backset - **N**
76mm Case / 57mm Backset - **N**

Nightlatches

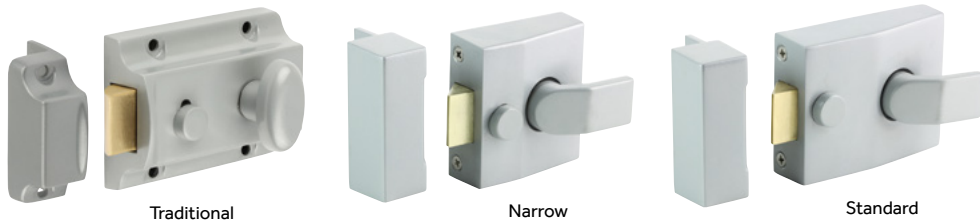


Traditional, Narrow & Standard Nightlatches

A range of nightlatches for use with external doors, key operated from external side of door, handle from internal. Complete with body and cylinder.

- Suitable for timber doors
- Hold back facility

- Supplied with 2 keys
- Complete with fixing screws



Available in Box:

Traditional nightlatch: 91 x 62mm - SI C
Narrow nightlatch: 68 x 73mm - SI C
Standard nightlatch: 94 x 73mm - SI C



*Electro brass finish supplied with silver nightlatches, chrome finish supplied with chrome nightlatches

Push Button Digital Lock

Mechanical push button digital lock, with hold back facility.

- Code easily changed
- 13 digit keypad
- Multiple combination options
- Allows codes of between 4 to 7 digits
- Suitable for doors up to 33-70mm thick
- Simple to install
- Includes fixings & instructions

Available in Box:

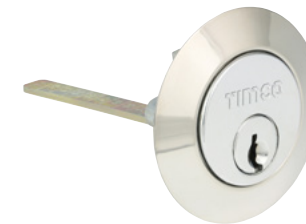
142 x 41mm - PC SC



Rim Cylinder

Replacement cylinder for most brands of nightlatches.

- For use with most nightlatches
- Suitable for doors up to 70mm thick
- Tailpiece can be cut to length
- 5 pin mechanism
- Supplied with 2 keys

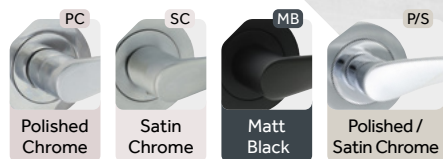


Available in Box:

32mm - C EB



Lever On Rose Range



Available in:



Box



Blister Pack

Complete Door Pack

Complete internal door pack includes everything to hang and operate a latching timber door.

Available in ranges:



Edleston - PC SC MB



Radmore - PC SC MB



Shavington - P/S

Complete Door Pack Contents:

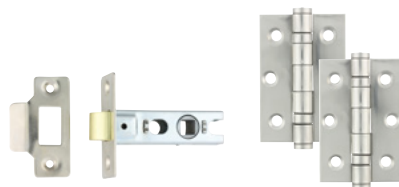
x1 Pair of Lever on Rose Handles

x1 64mm Bolt Through Tubular Latch

x1 Pair 76mm Steel Ball Bearing Hinges

Available in Box (fixings incl.):

Handle Rose Diameter: 51mm



Handle Packs

Edleston Lever On Rose

A contemporary designed lever with an arc and twist, easy to grip. For use on internal doors in conjunction with a tubular latch.

Pack Contents:

x1 Pair of Edleston Lever on Rose Handles

Available in Blister Pack (fixings incl.):

Handle Rose Diameter: 51mm - PC SC MB P/S



Radmore Lever On Rose

A sleek styled lever with straight lines. For use on internal doors in conjunction with a tubular latch.

Pack Contents:

x1 Pair of Radmore Lever on Rose Handles

Available in Blister Pack (fixings incl.):

Handle Rose Diameter: 51mm - PC SC MB



Shavington Lever On Rose

Modern styling with an oval appearance, soft curve and two tone finish. For use on internal doors in conjunction with a tubular latch.

Pack Contents:

x1 Pair of Shavington Lever on Rose Handles

Available in Blister Pack (fixings incl.):

Handle Rose Diameter: 51mm - MB P/S



Bathroom Thumb Turn & Release

Bathroom turn and release, for use on internal bathroom/WC doors in conjunction with a mortice bathroom lock or mortice deadbolt.



Available in Pack (fixings incl.):

Rose Diameter: 51mm - PC SC MB P/S

Standard & Euro Profile Escutcheon

Standard profile escutcheon, for use with traditional mortice sashlocks.

Euro profile escutcheon, for use with Euro profile cylinders.



Standard



Euro

Available in Pack (fixings incl.):

Rose Diameter: 51mm - PC SC MB P/S

Victorian Scroll Range



Available in:



Box



Blister Pack

Complete Door Pack

Victorian Scroll Latch - Door Pack

A complete internal door set. Pack includes everything to hang and operate a latching timber door.

Complete Door Pack Contents:

x1 Pair of Victorian Scroll Latch Handles

x1 64mm Tubular Latch

x1 Pair of 76mm Steel 1838 Hinges

Available in **Box & Blister Pack** (fixings incl.):

Handle Backplate Size: 114 x 42mm - **PC** **SC** **MB**



Handle Packs

Victorian Scroll Latch - Handles

Victorian scroll lever latch handle, for use on internal doors in conjunction with a tubular latch.

Pack Contents:

x1 Pair of Victorian Scroll Latch Handles

Available in **Blister Pack** (fixings incl.):

Handle Backplate Size: 114 x 42mm - **PC** **SC** **MB**



Victorian Scroll Lock - Handles

Victorian scroll lever lock handle, for use on internal or external doors in conjunction with a mortice sashlock.

Pack Contents:

x1 Pair of Victorian Scroll Lock Handles

Available in **Blister Pack** (fixings incl.):

Handle Backplate Size: 152 x 42mm - **PC** **SC** **MB**



Victorian Scroll Bathroom - Handles

Victorian scroll lever bathroom handle, for use on internal bathroom / WC doors in conjunction with a mortice bathroom lock.

Pack Contents:

x1 Pair of Victorian Scroll Bathroom Handles

Available in **Blister Pack** (fixings incl.):

Handle Backplate Size: 152 x 42mm - **PC** **SC** **MB**



Victorian Straight Range



Available in:



Box



Blister Pack

Complete Door Pack

Victorian Straight Latch - Door Pack

A complete internal door set. Pack includes everything to hang and operate a latching timber door.

Complete Door Pack Contents:

x1 Pair of Victorian Straight Latch Handles

x1 64mm Tubular Latch

x1 Pair of 76mm Steel 1838 Hinges

Available in **Box & Blister Pack** (fixings incl.):

Handle Backplate Size: 114 x 42mm - **PC** **SC** **MB**



Handle Packs

Victorian Straight Latch - Handles

Victorian straight lever latch handle, for use on internal doors in conjunction with a tubular latch.

Pack Contents:

x1 Pair of Victorian Straight Latch Handles

Available in **Blister Pack** (fixings incl.):

Handle Backplate Size: 114 x 42mm - **PC** **SC** **MB**



Victorian Straight Lock - Handles

Victorian straight lever lock handle, for use on internal or external doors in conjunction with a mortice sashlock.

Pack Contents:

x1 Pair of Victorian Straight Lock Handles

Available in **Blister Pack** (fixings incl.):

Handle Backplate Size: 152 x 43mm - **PC** **SC** **MB**



Victorian Straight Bathroom - Handles

Victorian straight lever bathroom handle, for use on internal bathroom / WC doors in conjunction with a mortice bathroom lock.

Pack Contents:

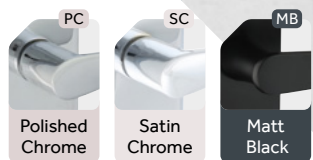
x1 Pair of Victorian Straight Bathroom Handles

Available in **Blister Pack** (fixings incl.):

Handle Backplate Size: 152 x 43mm - **PC** **SC** **MB**



Zeta Range



Available in:



Box



Blister Pack

Complete Door Pack

Zeta Latch - Door Pack

A complete internal door set. Pack includes everything to hang and operate a latching timber door.

Complete Door Pack Contents:

x1 Pair of Zeta Lever Latch Handles

x1 64mm Tubular Latch

x1 Pair of 76mm Steel 1838 Hinges

Available in **Box** (fixings incl.):

Handle Backplate Size: 175 x 45mm - **PC** **SC** **MB**



Handle Packs

Zeta Latch - Handles

Zeta lever latch handle, for use on internal doors in conjunction with a tubular latch.

Pack Contents:

x1 Pair of Zeta Lever Latch Handles

Available in **Blister Pack** (fixings incl.):

Handle Backplate Size: 175 x 45mm - **PC** **SC** **MB**



Zeta Lock - Handles

Zeta lever lock handle, for use on internal or external doors in conjunction with a mortice sashlock.

Pack Contents:

x1 Pair of Zeta Lever Lock Handles

Available in **Blister Pack** (fixings incl.):

Handle Backplate Size: 175 x 45mm - **PC** **SC** **MB**



Zeta Bathroom - Handles

Zeta lever bathroom handle, for use on internal bathroom / WC doors in conjunction with a mortice bathroom lock.

Pack Contents:

x1 Pair of Zeta Lever Bathroom Handles

Available in **Blister Pack** (fixings incl.):

Handle Backplate Size: 175 x 45mm - **PC** **SC** **MB**



Contractors Range

Available in:



Box



Blister Pack



Bag

Complete Door Packs

Contractors Lever Latch Door Pack

Complete internal door set, pack includes everything to hang and operate a latching door.

Pack Contents:

x1 Pair of Contractors Lever Latch Handles

x1 64mm Tubular Latch

x1 Pair of 76mm Steel Hinges

Available in Box (fixings incl.):

Handle Length Size: 100mm - SA



Contractors 3 Lever Lock Door Pack

Complete internal/external lock set, pack includes everything to hang and operate a locking door.

Pack Contents:

x1 Pair of Contractors Lever Lock Handles

x1 64mm 3 Lever Sashlock

x1 Pair of 100mm Steel Hinges

Available in Box (fixings incl.):

Handle Length Size: 100mm - SA



Handle Packs

Contractors Handles

Available in four styles, latch, bathroom, lock and euro profile. Suitable for most wooden doors.

Pack Contents:

x1 Pair of Contractors Handles

Contractors Latch Handles

For use on internal doors in conjunction with a tubular latch.

Available in Bag & Blister Pack (fixings incl.):

Handle Backplate Size: 103 x 40mm - SA



Latch

Contractors Bathroom & Lock Handles

Contractors Lever Bathroom/Privacy handles. For use on internal bathroom/WC doors in conjunction with a mortice bathroom lock or tubular latch.

Contractors Lever Lock handles for use on internal or external doors in conjunction with a mortice sashlock.



Bathroom



Lock

Available in Bag & Blister Pack (fixings incl.):

Handle Backplate Size: 154 x 40mm - SA

Contractors Euro Profile Lock Handles

Contractors Euro Profile Lever Lock handles for use on internal or external doors in conjunction with a euro profile mortice lock.

Available in Bag & Blister Pack (fixings incl.):

Handle Backplate Size:

155 x 40mm - SA



Euro



Contractors Latch Door Handles



Lever On Rose Handles

Contractors lever on rose, for use on internal doors in conjunction with a tubular latch. Features a sprung rose so the handle returns to its original position when released.

- Internal use only
- Suitable for most wooden doors



Available in:



Box



Blister Pack

Available in Box & Blister Pack (fixings incl.):
Handle Rose Diameter: 52mm - SA

Bathroom Thumb Turn & Release On Rose Set

Bathroom thumb turn and release, for use on internal bathroom/WC doors in conjunction with a mortice bathroom lock or mortice deadbolt.

- Suitable for most wooden doors
- Emergency override/release from outside



Available in Bag & TIMpac (fixings incl.):
54mm - SA

Antique Style Handles & Pull Handles

Narrow Style Lever Handles

A pair of narrow style handles. Available in three styles, Lock, Latch and Bathroom.

- Sprung handles
- Max Door Thickness 44mm



Lock Latch Bathroom

Available in Box (fixings incl.):
155 x 37mm - ABL

Traditional Lever Handles

A pair of traditional style handles. Available in three styles, Lock, Latch and Bathroom.

- Sprung handles
- Max Door Thickness 44mm



Lock Latch Bathroom

Available in Box (fixings incl.):
155 x 54mm - ABL

Fleur De Lys Ornate Lever Handles

A pair of fleur de lys ornate handles. Available in three styles, Lock, Latch and Bathroom.

- Sprung handles
- Max Door Thickness 44mm



Lock Latch Bathroom

Available in Box (fixings incl.):
195 x 55mm - ABL

Fleur De Lys Pull Handle

Used to pull the door or cupboard closed. Fleur De Lys pattern provides a vintage feature to any timber door.

- Manufactured from solid brass
- Internal & external use with timber doors
- Face fixing



- Sprung handles
- Made from steel

Available in Bag & TIMpac (fixings incl.):
178mm - PB PC SC

Available in Bag (fixings incl.):
100mm - ABL
162mm - ABL

Pull Handles & Door Accessories



Oval Grip Pull Handle

A door pull handle with off-set oval grip. Also known as cranked handles.

- Internal & external use
- Manufactured from solid brass
- Face fixing



Available in Bag & TIMpac
(fixings incl.):
228mm - **PB** **PC** **SC** **SA**

Bow Handle

Bow shaped pull handle suitable for internal and external applications.

- Internal & external use
- Suitable for internal & external applications
- Face fixing
- Manufactured from satin anodised aluminium (SA Only)



Available in Bag & TIMpac
(fixings incl.):
145mm - **SA**
152mm - **PB** **PC** **SC**

D Shaped Pull Handle On Rose

D shaped pull handle on rose suitable for internal and external applications. Featuring concealed fixings under the screw on rose.

- Suitable for internal & external applications
- Face fixing



Available in Bag & TIMpac
(fixings incl.):
152mm - **SA**
229mm - **SA**
305mm - **SA**

D Shaped Cabinet Handle

Traditional D shaped pull handle with round bar profile is suitable for internal applications. Rear concealed bolt through fixing for a secure fitting.

- Suitable for internal applications
- Rear fixing



Available in Bag & TIMpac
(fixings incl.):
100mm - **SA**
150mm - **SA**

Flush Pull

Flush pulls are a simple recess pull that allows doors to slide in front of one another without catching any door hardware. These are mortised into the face of the door providing a flush finish. Ideal for pocket, sliding or folding doors.

- Flush fitting
- Internal use only
- Face fixing



Available in Bag & TIMpac
(fixings incl.):
89mm - **SA**

Traditional Pattern Sash Pull Handle

Traditionally used for opening and closing wooden sash windows. Can also be used on small cupboard doors to add a stylish and decorative look.

- Manufactured from solid brass
- Face fixing
- Internal use with wooden sash windows and cupboard doors

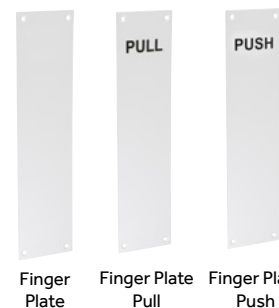


Available in Bag & TIMpac
(fixings incl.):
100mm - **PB** **PC** **SC** **MB**
160mm - **PB** **PC** **SC** **MB**

Finger Plates

Finger plates for protecting the push side of a door and hide any fixings from the pull handle on the opposite side. Face fixing with four pre-drilled countersunk fixing holes. Also available with the text PULL or PUSH engraved at the top of the plate providing clear instructions for the user.

- Face fixing



Available in Bag & TIMpac
(fixings incl.):
305 x 76mm - **SA**

Protects the push side of a door and conceals handle fixings from the opposite side.

- Manufactured from solid brass
- Internal use only
- Plain finger plate
- Face fixing



Available in Bag & TIMpac
(fixings incl.):
305 x 76mm - **PB** **PC** **SC**

Fire Door Signs

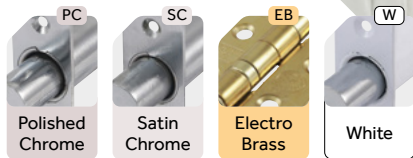
Fire door signage to communicate information about fire doors. Legal requirement for all business buildings with fire doors. Screw fix for quick installation.

- Face fixing



Available in TIMpac & Bag
(fixings incl.): - **SA**

Door Security



Spring Door Closer

Surface mounted spring door closer pushes the door closed. Adjustable tension and suitable for internal doors weighing up to 68kg.

- Adjustable tension
- Surface mounted
- Spring operated
- Left and right hand fitting



Available in Box (fixings incl.):
120mm - **EW**

Hinge Bolt

Hinge bolts provide additional security for outward opening doors. They prevent the door being removed from the frame in the event of the hinge knuckle being attacked.



Available in TIMpac (fixings incl.)
& **Bag** (excl. fixings):
48mm - **EB Z**

Door Rack Bolt

An ideal way to increase security on timber doors. Morticed into the door and operated by a spline/rack bolt key that throws the bolt into the frame.

- Each pack contains 2 bolts & 1 key

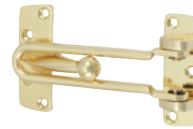


Available spare
Rack Bolt Keys -
Pack of 2

Available in TIMpac (fixings incl.)
& **Bag** (excl. fixings):
60mm - **EB PC SC W**

Door Restrictor

When engaged door restrictors reduce the opening of the door and restrain against a forced attack.



Available in Bag (excl. fixings):
107mm - **EB PC SC**

Cabin Hook

Ideal for retaining doors in an open position in domestic and light commercial applications.



Available in TIMpac (fixings incl.)
& **Bag** (excl. fixings):
75, 100 & 150mm - **EB PC SC**

Scroll Necked Bolt

Necked Slide bolt for doors & cupboards. For use when the door & frame are not flush. Supplied with matching fixing screws.



Available in Bag (fixings incl.):
128mm - **ABL**

Door Chains

When engaged door chains reduce the opening angle of the door enabling the occupant to identify and speak to the caller before the door is released and restrain against a forced attack.

Door Chain



Available in Bag (excl. fixings):
85mm - **EB PC SC**

Security Door Chain



Available in TIMpac (fixings incl.)
& **Bag** (excl. fixings):
44mm - **EB PC SC**

Straight Barrel Bolt

Ideal for securing flush fitting doors in a closed position.

- Made from solid brass



Available in Bag (excl. fixings)
& **TIMpac** (fixings incl.):
75 x 25mm - **PB PC SC**
100 x 25mm - **PB PC SC**
150 x 25mm - **PB PC SC**



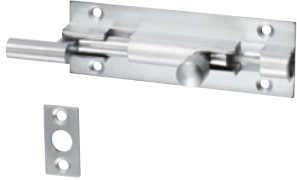
- Made from satin anodised aluminium
- Face fixing
- Internal use only

Available in TIMpac (fixings incl.) & **Bag** (excl. fixings):
50 x 25mm - **SA**
75 x 25mm - **SA**
100 x 25mm - **SA**

Necked Barrel Bolt

Ideal for securing recessed fitted doors in a closed position.

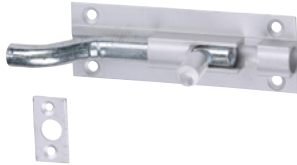
- Made from solid brass



Available in **TIMpac** (fixings incl.)
& **Bag** (excl. fixings):

75 x 25mm - **PB** **PC** **SC**
100 x 25mm - **PB** **PC** **SC**
150 x 25mm - **PB** **PC** **SC**

- Made from satin anodised aluminium
- Face fixing
- Internal use only



Available in **Bag**
& **TIMpac** (fixings incl.):

75 x 25mm - **SA**

Lever Action Flush Bolt

Lever action flush bolts are morticed into the face or leading edge of the door providing a flush door surface finish. They are commonly fitted to double doors to secure the slave door leaf in place.



- Made from solid brass

Available in **TIMpac** (fixings incl.)
& **Bag** (excl. fixings):

150 x 19mm - **PB** **PC** **SC**
200 x 19mm - **PB** **PC** **SC**



- Flush fitting
- Suitable for French and double doors
- Internal use only

Available in **Bag**
& **TIMpac** (fixings incl.):

155 x 20mm - **SA**

Contract Flat Section Bolt

A decorative bolt for securing flush mounted doors. Commonly fitted to French doors.

- Made from solid brass



Available in **TIMpac** (fixings incl.)
& **Bag** (excl. fixings):

110 x 25mm - **PB** **PC** **SC**
135 x 30mm - **PB** **PC** **SC**
210 x 35mm - **PB** **PC** **SC**

Architectural Flat Section Bolt

A high quality designer bolt commonly used for securing French doors. The bolt comes supplied with all three keeps required for flush and recessed mounted doors.

- Made from solid brass



Available in **TIMpac** (fixings incl.)
& **Bag** (excl. fixings):

100 x 35mm - **PB** **PC** **SC**
150 x 35mm - **PB** **PC** **SC**
210 x 35mm - **PB** **PC** **SC**

Indicator Bolt

Indicator to show vacant or engaged.

- Ideal for bathroom and cubicle doors
- External coin release facility
- Max door thickness 50mm



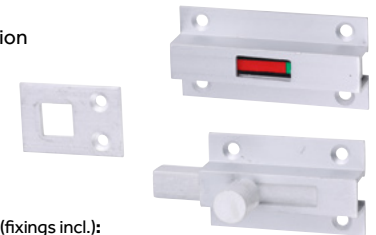
Available in **TIMpac** (fixings incl.)
& **Bag** (excl. fixings):

66mm - **EB** **PC** **SC**

Bathroom Indicator Bolt

Bathroom indicator bolt with a slide-action to engage the bolt. For use on toilet doors, the red/green indicator appears when the bolt is locked/unlocked to indicate if occupied or not.

- Aluminium construction
- Internal use only



Available in **Bag** & **TIMpac** (fixings incl.):

66 x 32mm - **SA**

Toilet Roll Holder

Wall mounted toilet roll holder with spring-loaded insert. Perfect for holding 1 roll of toilet paper.

- Made from satin anodised aluminium
- Face fixing

Available in **Bag** & **TIMpac** (fixings incl.):

135 x 80mm - **SA**



Intumescent Letterbox & Applique Drop Down Seal

Intumescent Letterbox

A stylish ABS framed, telescopic letterbox fitted with a high performance intumescent liner. In the event of fire the intumescent liner expands rapidly and seals off the letterbox opening.

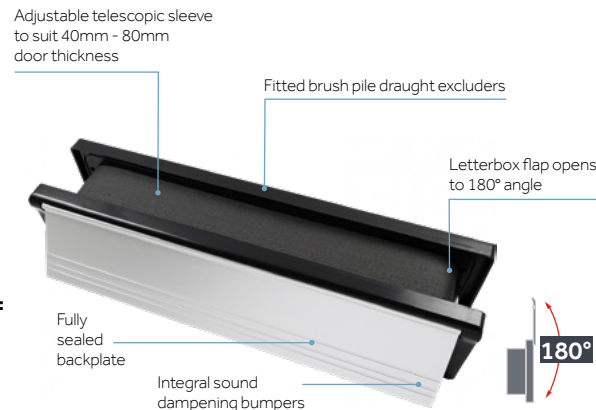
- Fire tested to BS 476 part 22: 1987 & BS EN 1634-1
- Acoustic tested to BS EN ISO 140-3: 1995 Achieving 32dB Rw
- Smoke tested to BS 476 part 31/1: 1983 Integral sound
- Integral sound dampening bumpers

Available in Box - Black Frame (fixings incl.):

272 x 70mm - SA PG PS
305 x 70mm - SA PG PS

Available in Box - Silver Frame (fixings incl.):

272 x 70mm - SA
305 x 70mm - SA



Product shown is Satin Anodised Aluminium with black frame.

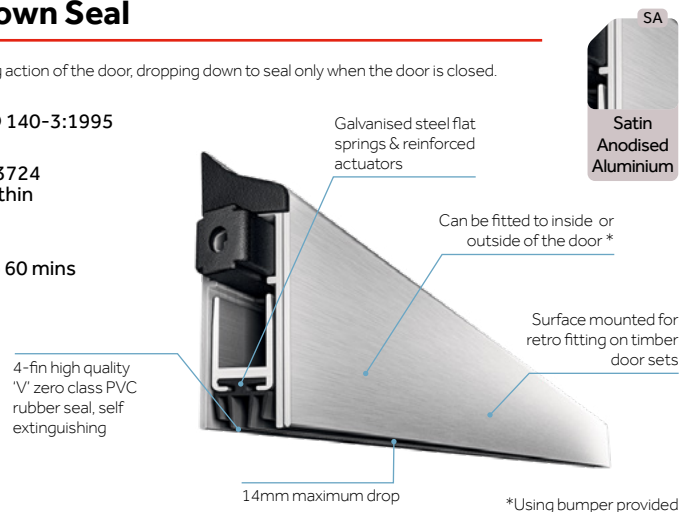
Applique Drop Down Seal

The seals are activated by the closing action of the door, dropping down to seal only when the door is closed.

- Acoustic testing BS EN ISO 140-3:1995 rating of up to 37dB Rw
- Security tested to BS EN 13724 Clause 6.6.5 (Compliant within scope of PAS 23/24)
- Fire tested to BS476: Part 20/22: 1987 to 60 mins
- Smoke tested to BS EN 1634-3: 2004

Available in Box (fixings incl.):

730 x 40mm - SA
830 x 40mm - SA
930 x 40mm - SA
1030 x 40mm - SA



Intumescent Pipe Collars & Pipe Wraps

Intumescent Pipe Collars

Designed for retro-fit to plastic piping or trunking where it passes through fire resistant structures such as walls or floors. In the event of a fire, the collar's intumescent core rapidly expands to crush the pipe or trunking, which seals off the area and maintains the fire integrity of the structural element.

- Stainless Steel outer casing
- Tested to BS EN 1366-3, BS476 part 20
- Intumescent material unaffected by water
- 10 year guarantee
- 4 hour fire rating

Available in Bag (fixings incl.):

75 x 60mm
95 x 60mm
130 x 60mm
195 x 60mm



Intumescent Pipe Wraps

Designed for installation around plastic piping or trunking passing through fire resistant structures such as walls and doors. In the event of a fire the contained intumescent material rapidly expands and crushes the pipe or trunking, sealing off this area and maintaining the integrity of the structural elements through which it passes.

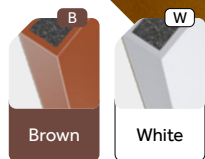
- Tested to BS EN 1366-3, BS476 part 20
- Intumescent material unaffected by water
- 10 year guarantee
- 4 hour fire rating

Available in Bag (fixings incl.):

210 x 80 x 5mm
285 x 80 x 5mm
385 x 80 x 5mm
540 x 80 x 5mm



Intumescent Accessories



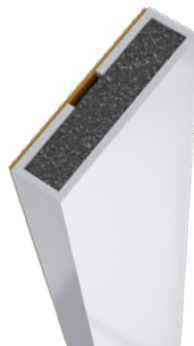
Intumescent Fire Only Seals

- Tested to BS476 Part 22, BS EN 1634-1
- Laboratory ageing tested for 100 years
- Rapid high-pressure multi-directional expansion
- Supplied with self adhesive backing for ease of installation
- Available to suit 30 & 60 min fire doors

Available in Single Door Pack (1m) & Bulk Pack (2.1m):

10 x 4mm (To suit 30 min fire doors) - (W) (B)

15 x 4mm (To suit 30 & 60 min fire doors) - (W) (B)



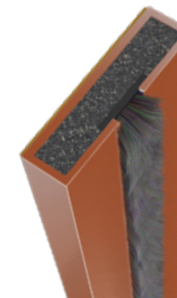
Intumescent Fire & Smoke Seals

- Tested to BS476 Part 22, BS EN 1634-1
- Laboratory ageing tested for 100 years
- Rapid high-pressure multi-directional expansion
- Supplied with self adhesive backing for ease of installation
- Available to suit 30 & 60 min fire doors

Available in Single Door Pack (1m) & Bulk Pack (2.1m):

10 x 4mm (To suit 30 min fire doors) - (W) (B)

15 x 4mm (To suit 30 & 60 min fire doors) - (W) (B)



Intumescent Hinge Pads

Intumescent hinge pads are an essential requirement when fitting hinges to fire doors as they seal any gaps in the rebate and prevent the transfer of heat from the hinge to the door and frame in the event of a fire.

- Tested to BS476 Part 22, BS EN 1634-1
- Available to suit 30 & 60 min fire doors

Available in Bag :

31 x 100mm (To suit 30 min fire doors)

TIMpac:

18 x 75mm & 30 x 100mm
(To suit 30 & 60 min fire doors)



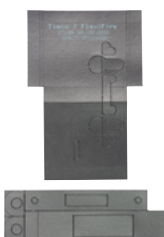
Universal Intumescent Tubular Latch, Deadlock & Sashlock Kits

TIMCO FlexiFire HS is a graphite-based elastomeric sheet material custom cut for use on rebated hardware such as tubular latches, deadlocks and sashlocks. FlexiFire HS has an expansion ratio in excess of 15 times its original volume.

- Safe to handle and easy to use (no PPE required)
- Excellent temperature insulation before and after exfoliation
- Completely non-toxic and non-fibrous
- Unaffected by moisture, humidity, atmospheric pollution
- When heated to approximately 180°C graphite located at the surface begins to exfoliate
- FlexiFire has been tested extensively to both BS476 Part 22 & EN1634-1
- Available to suit 30 & 60 min fire doors



Tubular Latch



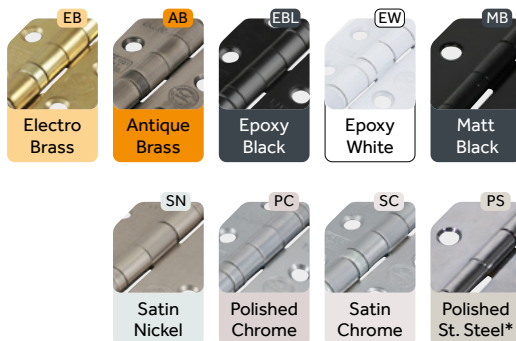
Deadlock



Sashlock

Available in TIMpac:
Universal Size

Fire Door Hinges



Ball Bearing Fire Door Hinges

- Smooth ball bearing action
- Suitable for 30 & 60 minute fire doors
- For doors with heavy traffic - tested to 200,000 cycles
- CE Approved - BS EN 1935
- Fit with intumescent hinge pads (not included) when fitting fire doors to adhere to fire regulations



Grade 13 - Ideal for heavy doors up to 120kg.

- Made from stainless steel

Sold in pairs or pair and a half

Available in Blister Pack & Box (fixings incl.):

101 x 76mm - **EB** **PS** **SS** **MB**



Grade 11 - Ideal for heavy doors up to 80kg.

- Made from steel

Available in TIMpac (fixings incl.):

101 x 76mm - **EB** **PC** **SC**

Box (fixings incl.): 101 x 76mm - **EB** **PC** **SC** **SN**



Grade 7 - Ideal for heavy doors up to 40kg.

- Made from steel

Available in TIMpac (fixings incl.):

76 x 50mm - **EB** **PC** **SC** **EBL**

Box (fixings incl.):

76 x 50mm - **EB** **PC** **SC** **SN** **EBL**



St. Steel* - Stainless Steel

Door & Cabinet Hinges



Twin Ball Bearing Hinge - 201 Stainless Steel

Designed for use on medium duty doors in domestic and commercial areas. Lubricated ball bearing washers reduce wear of the knuckles, increasing the life of the hinge and provides a smooth door operation.

- Made from 201 stainless steel



Available in Box (fixings incl.):

76 x 51mm - **PS**

Twin Ball Bearing Hinge - Steel

Designed for use on medium duty doors in domestic and commercial areas. Lubricated ball bearing washers reduce wear of the knuckles, increasing the life of the hinge and provides a smooth door operation.

- Made from steel



Available in Box (fixings incl.):

76 x 51mm - **SN** **EB** **AB** **W** **BL**

102 x 76mm - **SN** **EB** **PC** **SC**



Double Steel Washered Hinge

Ideal for hanging internal doors in domestic applications.

- Double washers prevent knuckle wear for long lasting performance
- Economy steel pin and washers
- Hinge manufactured from solid brass to guarantee no rust and a superior finish
- Available in a variety of finishes



Available in TIMpac & Bag (fixings incl.):

76 x 50mm - **PB** **PC** **SC**
102 x 67mm - **PB** **PC** **SC**

Double Stainless Steel Washered Hinge

Ideal for hanging internal doors in domestic applications.

- Double washers prevent knuckle wear for long lasting performance
- Stainless steel pin and washers for superior rust protection
- Hinge manufactured from solid brass to guarantee no rust and a superior finish
- Available in a variety of finishes



Available in Box (fixings incl.):

76 x 50mm - **PC** **SC**
102 x 67mm - **PC** **SC**
102 x 75mm - **PC** **SC**

Plain Bearing Flush Hinge

Ideal for hanging light cupboard and cabinet doors in quality joinery projects.

- Flush finish enables a quick and easy fitting with no morticing required
- Brass bearing to prevent wear and provide a lifetime of silent, smooth door operation
- Manufactured from high quality extruded brass to guarantee no rust and a superior finish
- Available in a variety of finishes



Available in Bag (fixings incl.):

60 x 41mm - **PC** **SC**
75 x 50mm - **PB** **PC** **SC**

Hurlinge - Fixed Pin (104)

Ideal for use in a variety of joinery applications. Commonly used for light cupboards, cabinets, bifold, louvre doors and shutters.

- Offset knuckle provides an even appearance between the door and frame
- Flush finish enables a quick and easy fitting with no morticing required
- Lugs on the knuckle for quick and simple alignment
- Manufactured from steel and available in a variety of finishes



Available in Bag (excl. fixings):

75 x 55mm - **Z** **EB** **PC**
101 x 66mm - **Z** **EB** **PC**

Flush Hinge

Ideal for use in a variety of joinery applications. Commonly used for light cupboards, cabinets, bifold, louvre doors and shutters.

- Flush finish enables a quick and easy fitting with no morticing required
- Manufactured from steel and available in a variety of finishes



Available in TIMpac (fixings incl.)
& Bag (excl. fixings):

38 x 28mm - **Z** **EB**
50 x 38.5mm - **Z** **EB** **W**
63 x 37mm - **Z** **EB**
75 x 51mm - **Z** **EB**

Hurlinge - Loose Pin (104Z)

Ideal for use in a variety of joinery applications. Commonly used for light cupboards, cabinets, bifold, louvre doors and shutters.

- Offset knuckle provides an even appearance between the door and frame
- Loose pin for easy door removal
- Flush finish enables a quick and easy fitting with no morticing required
- Lugs on the knuckle for quick and simple alignment
- Manufactured from steel and available in a variety of finishes



Available in TIMpac
(fixings incl.):

100 x 66mm - **Z** **EB**

Bag (excl. fixings):

75 x 52mm - **Z** **EB** **PC**
100 x 66mm - **Z** **EB** **PC**

Strong Steel Butt Hinge (451)

Ideal for use on heavy duty doors.

- A heavy duty version of the plain butt hinge
- Manufactured from thicker gauge steel for added strength
- Fixed pin for use with inward and outward opening doors

Available in Bag
(excl. fixings):
100 x 73mm - Z



Strong Security Hinge (451/S)

Ideal for use in public areas and outward opening doors.

- Interlocking lugs prevent door removal due to vandalism
- Manufactured from thicker gauge steel for added strength
- Fixed pin for use with inward and outward opening doors

Available in Bag
(excl. fixings):
100 x 72.5mm - Z



Narrow Uncranked Butt Hinge (5050)

A narrow economy hinge for a variety of uses.

- Narrow hinge leaves for use with thinner doors
- Fixed pin for use with inward and outward opening doors
- Manufactured from steel and available in self colour and zinc finishes

Available in Bag
(excl. fixings):
75 x 48mm - S Z
100 x 58mm - S Z
127 x 65mm - S Z
150 x 75mm - S Z



Cast Iron Butt Hinge (200)

Commonly used for specialised applications.

- Manufactured from cast iron to match period door ironmongery
- Fixed pin for use with inward and outward opening doors
- Available in self colour and black finishes

Available in Bag
(excl. fixings):
75 x 50mm - S BL
102 x 60mm - S BL



Fixed Pin Butt Hinge (1838)

An economy hinge for a variety of uses.

- Fixed pin for use with inward and outward opening doors
- Manufactured from steel with a variety of plating finishes

Available in TIMpac (fixings incl.):

25 x 25mm - Z
38 x 34mm - Z
63 x 44mm - Z
75 x 50mm - Z S EB PC BL
100 x 70mm - Z S EB PC BL

Bag (excl. fixings):

25 x 25mm - Z S EB
38 x 34mm - Z S EB
63 x 44mm - Z EB
75 x 50mm - Z S EB PC SC W BL
90 x 60mm - Z S EB
100 x 70mm - Z S EB PC SC W BL

Bulk Box (excl. fixings):
75 x 50mm - Z



Loose Pin Butt Hinge (1840)

- Loose pin for easy door removal
- Recommended for internal doors
- Manufactured from steel with a variety of finishes

Available in TIMpac (fixings incl.):

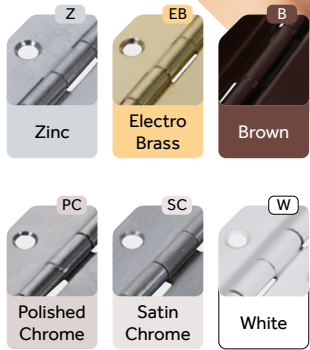
75 x 50mm - Z EB PC SC

Bag (excl. fixings):

75 x 50mm - Z EB PC SC W BL
90 x 60mm - Z EB PC
100 x 71mm - Z EB PC SC W BL



Specialist Hinges



Rising Butt Hinge (466)

Designed for uneven floor surfaces or obstructions such as deep pile carpets.

- Spiral knuckle lifts the door throughout the opening cycle
- Quick and easy removal of doors
- Self-closing design
- Available in left and right handed opening
- Manufactured from steel and available in zinc and electro brass finishes

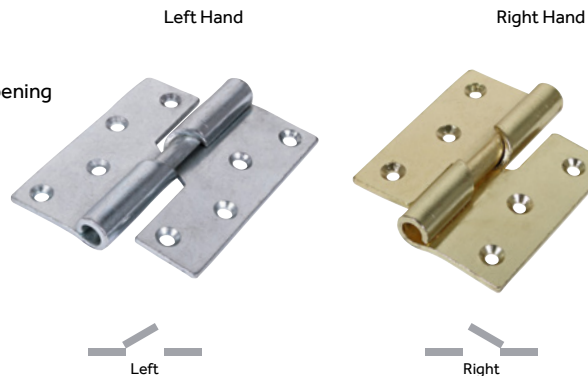
Available in TIMpac (fixings incl.):

75 x 72mm - Z

Bag (excl. fixings):

75 x 72mm - Z EB

100 x 86mm - Z EB



Lift Off Hinge (457)

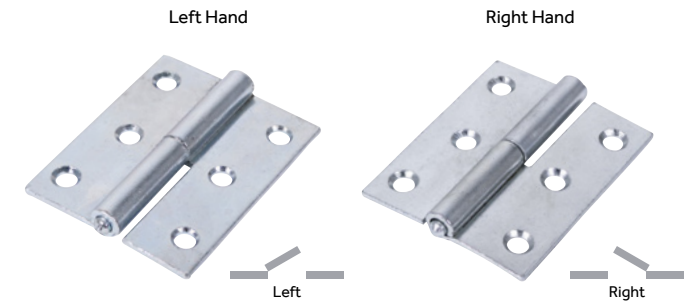
Designed to enable the door to be lifted out of the frame.

- For doors that may require emergency access when closed
- Quick and easy removal of doors
- Available in left and right handed opening
- Manufactured from steel in a zinc finish

Available in Bag (excl. fixings):

75 x 62mm - Z

101 x 63mm - Z



Ball Bearing Stormproof Hinge (1951)

Designed to fit stormproof rebated casement frames in quality joinery projects.

- Ball bearing raced knuckles to prevent wear and provide a lifetime of silent, smooth door operation
- Cranked knuckle to assist with weatherproofing
- Manufactured from high quality extruded brass to guarantee no rust and a superior finish
- Available in a variety of finishes



Available in Box (excl. fixings):

64 x 55mm - PB PC SC

Stormproof Hinge (1951)

Designed to fit a stormproof rebated casement frame.

- Allows the door to pivot away from the frame
- Cranked knuckle to assist with weatherproofing
- Manufactured from steel and available in a variety of finishes

Available in TIMpac (fixings incl.):

63 x 58mm - Z

Bag (excl. fixings):

63 x 58mm - Z B W



Backflap Hinge - Uncranked Knuckle (404)

Ideal for thin doors or folding joints on furniture.

- Fits to the surface when the material is too thin for butt hinges
- Manufactured from steel in a zinc finish



Available in TIMpac
(fixings incl.):

32 x 76mm - Z
38 x 87mm - Z
50 x 106mm - Z

Bag (excl. fixings):

25 x 74mm - S
32 x 76mm - Z S
38 x 87mm - Z S
50 x 106mm - Z S
65 x 147mm - Z S
75 x 167mm - Z S

Parliament Hinge

Commonly used when projecting architraves prevent the door from opening fully.

- Projecting knuckle allows the door to open to 180° maximising doorway and room space
- Manufactured from high quality extruded brass to guarantee no rust and a superior finish
- Available in a variety of finishes



Available in Box (fixings incl.):

102 x 100mm - EB PC SC
102 x 125mm - EB PC SC
102 x 150mm - EB PC SC

Counter Flap Hinge

Designed for all counter types. A popular choice for public bars.

- Lies flat when open
- Manufactured from high quality extruded brass to guarantee no rust and a superior finish
- Available in a variety of finishes



Available in Box (fixings incl.):

100 x 40mm - PB PC SC

Piano Hinge

Commonly fitted to piano lids, plus a wide variety of other uses, providing a neat solution. Also known as continuous hinge.



- Surface mounted no rebating required for quick and easy installation
- Designed to run the full length of the door or cabinet for extra stability
- Easily cut to required length
- Manufactured from steel and available in electro brass and nickel finishes

Available in Box (fixings incl.):

1800 x 25mm - EB N
1800 x 32mm - EB N
1800 x 38mm - EB N

Cabinet Hinges

Concealed hinges are suitable for use on overlay kitchen, bathroom and furniture cabinets.



Available in Bag & TIMpac
(fixings incl.):

Opening Angle 90° - N

Clip-On Soft-Close Cabinet Hinges

Concealed hinges are suitable for use on overlay kitchen, bathroom and furniture cabinets with clip-on design for easy removal.



Available in Bag & TIMpac
(fixings incl.):

Opening Angle 90° - N

Opening Angle 170° - N

Butterfly Hinges

Black Antique Butterfly pattern hinges. Surface fixing ideal for small cupboards or boxes.



Available in Bag (fixings incl.):

70 x 48mm - ABL

Crown / Coronet Hinges

Black Antique Crown/Coronet pattern working hinges for doors to give a decorative finish.



Available in Bag (fixings incl.):

317 x 107mm - ABL

Unequal Hinges

Black Antique Unequal pattern working hinges for internal doors to give a decorative finish.



Available in Bag
(fixings incl.):

105 x 86mm - ABL

Spear Hinges

Black Antique spear pattern working hinges for doors to give a decorative finish.



Available in Bag (fixings incl.):

161 x 90mm - ABL

Available in Bag (fixings incl.):

237 x 108mm - ABL

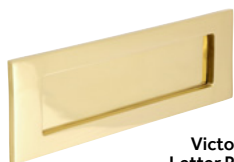
Architectural Door Accessories



Letter Plate

A piece of door furniture that allows mail and letters to be safely posted.

- Manufactured from solid brass
- Inward opening sprung flap
- Bolt through fixing
- Suitable for internal & external applications
- Suitable for A5 documents



Victorian
Letter Plate

Available in Box
& TIMpac (fixings incl.):
250 x 74mm - **PB** **PC** **SC**

- Manufactured from satin anodised aluminium
- Gravity flap automatically closes realised
- Suitable for internal & external applications
- Bolt through fixing



Letter Plate

Available in Bag
& TIMpac (fixings incl.):
254 x 76mm - **SA**

Letter Tidy

Use on the inside of the door to cover the reverse of an external letter plate and fixings. Provides a neat finish and helps reduce draughts.

- Manufactured from solid brass
- Covers hole created by external letter plate
- Internal use with timber doors



Available in Box
& TIMpac (fixings incl.):
302 x 86mm - **PB** **PC** **SC**

Door Numerals

Door numerals provide a stylish and functional feature for timber doors.

- Manufactured from solid brass
- Numerals 0-9
- Screw fixing
- Suitable for internal & external applications



Available in Bag
& TIMpac (fixings incl.):
0-9 Door Numeral - **PB** **PC** **SC**

Traditional Door Bell Push

Connects to internal door chimes alerting the homeowner to the arrival of visitors.

- Manufactured from solid brass
- External use with timber doors
- Two wire connection to battery or transformer
- Traditional Victorian pattern



Available in Box
& TIMpac (fixings incl.):
80 x 31mm - **PB** **PC** **SC**

Door Letters

Door numerals provide a stylish and Door letters provide a stylish and functional feature for timber doors.

- Manufactured from solid brass
- Screw fixing
- Suitable for internal & external applications



Available in Bag
& TIMpac (fixings incl.):
A, B, C Door Letter - **PB** **PC** **SC**

Centre Door Knob

A decorative single knob usually fitted to the middle of the door, to pull the door closed.

- Manufactured from solid brass
- Internal & external use with timber doors
- Anti rotation pin
- Bolt through fixing
- 80mm rose diameter



Available in Box
& TIMpac (fixings incl.):
66mm - **PB** **PC** **SC**

Urn Pattern Door Knocker

An alternative to a bell alerting the homeowner to the arrival of visitors. Both a stylish and functional feature for timber doors.

- Manufactured from solid brass
- Bolt through fixing
- External use with timber doors



Available in Box
& TIMpac (fixings incl.):
166 x 60mm - **PB** **PC** **SC**

Door Viewer

Allows visibility of the person outside before opening the door.

- Suitable for doors 35 - 50mm in thickness



Available in Box
& TIMpac (fixings incl.):
15mm - **PB** **PC** **SC**

Euro & Lock Profile Self-Adhesive Escutcheon - Oblong & Round

Ideal for concealing door damage surrounding the key or cylinder cut out. Self-adhesive for easy installation where there is difficulty using a screw fixing into the door.

- Manufactured from stainless steel
- Quick & easy installation
- Low profile



Oblong - Euro



Oblong - Lock



Round - Euro

Available in Bag & TIMpac (fixings incl.):
65 x 47mm - **SS**

Cylinder Pull

Use with traditional nightlatches for pulling a door closed.

- Manufactured from solid brass
- 30mm cylinder hole diameter
- No fixings required
- External use with timber doors



Available in Bag & TIMpac (fixings incl.):
79 x 41mm - **PB** **PC** **SC**

Provide a method of pulling a door closed when no pull handle or door knob is present.



Euro



Standard

Available in Bag & TIMpac (fixings incl.):
70 x 42mm - **SA**

Pair of Traditional Pattern Escutcheons

For use with traditional mortice locks, one open and one with a rotating cover for privacy.

- Manufactured from solid brass
- Internal & external use with timber doors



Available in Box & TIMpac (fixings incl.):
32mm - **PB** **PC** **SC**

Covered Escutcheon

Covered escutcheon with rotating cover for privacy.

- Manufactured from solid brass
- Suitable for internal & external applications
- Provides privacy
- Face fixing



Available in Bag & TIMpac (fixings incl.):
38mm - **SA**



Door Catches & Latches

Bales Catch

Used for securing internal doors that require just a push/pull handle. Adjustable roller to adjust the closing tension of the door.



Available in Bag & TIMpac (excl. fixings): 20mm - **EB**

Double Ball Catch

A solid brass push fit catch for securing cupboard or cabinet doors.



Available in Bag & TIMpac (excl. fixings):
43mm - **C** **EB**
50mm - **C** **EB**

Adjustable Roller Catch

Used for securing internal doors that require just a push/pull handle. Adjustable roller to adjust the closing tension of the door.



Available in Bag & TIMpac (excl. fixings): 39mm - **EB** **N**

Double Roller Catch

A surface mounted push fit catch for securing cupboard or cabinet doors.



Available in Bag & TIMpac (excl. fixings):
28 x 32mm - **Z**

Magnetic Catch

A surface mounted light duty magnetic catch for securing cupboard or cabinet doors.



Available in Bag & TIMpac (excl. fixings):
40 x 22mm - **W**
58 x 22mm - **W**

Cupboard Catch

Ideal for cupboard doors to hold in a closed position. Catch can be released by turning the knob.

- Made from steel



Available in Bag & TIMpac (fixings incl.):
38 x 56 x 30mm - **N**

Small Cupboard Lock

Fits to the inside of a door and is key operated from the outside.

- Suitable for doors up to 30mm thickness
- Two keys included

Available in Bag & TIMpac (fixings incl.): 10mm - **EB**

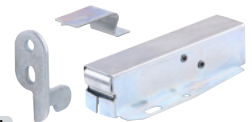


Touch Latch

Commonly used on loft hatches and cupboard doors. Simply push to open and push to close.

- Made from steel
- Hidden latch

Available in Bag & TIMpac (fixings incl.): 77 x 35 x 20 - **Z**



Door Stops

Projection Door Stop

Fits to walls and skirting boards and will prevent damage to walls from door handles. The rubber tip prevents damage to the door. High quality plated finishes.



Available in TIMpac (fixings incl.) & Bag (excl. fixings):
70mm - PC SC PB

Door Stops

A selection of door stops designed to prevent damage from handles hitting the wall when the door is opened. Each features a rubber buffer to protect doors from damage.

- Manufactured from satin anodised aluminium



Projection



Round

Oval

Available in Bag & TIMpac (fixings incl.):
Projection - 70mm - SA
Round - 38mm - SA
Oval - 50mm - SA

Oval Door Stop

A floor mounted stop that can be mounted at any point of the door opening. The rubber buffer prevents damage to doors. High quality plated finishes.



Available in TIMpac (fixings incl.) & Bag (excl. fixings):
47mm - PC SC PB

Spring Door Stop



Available in TIMpac (fixings incl.):
78 x 24mm - EB N

PVC Door Stop

A floor mounted door stop used to prevent doors from damaging walls.

Available in TIMpac (fixings incl.):
32 x 21mm - W BL



Cylinder Door Stop

A floor mounted stop that can be positioned at any point of the door opening. Concealed fixing for added aesthetics. The rubber buffer prevents damage to doors. High quality plated finishes.



Available in TIMpac (fixings incl.) & Bag (excl. fixings):
41mm - PC SC PB

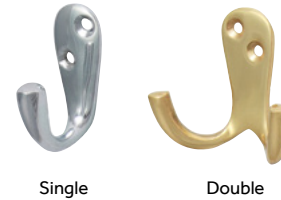
PVC Door Wedge

A triangular shaped wedge used to temporarily stop doors from closing.



Available in TIMpac:
136 x 43 x 29mm

Single & Double Robe Hook



Single

Double

Commonly fitted to doors or walls for hanging hats, coats or bathrobes.

Available in TIMpac (fixings incl.) & Bag (excl. fixings):
Single - 44 x 18mm - PC SC PB
Double - 47 x 24mm - PC SC PB

Single Robe Hook

Commonly fitted to doors or walls to provide a hanger for robes, bathroom towels or similar.



- Face fixing
- Internal use only

Available in Bag & TIMpac (fixings incl.):
47 x 19mm - SA

Hat & Coat Hooks

Commonly fitted to doors or walls to provide a hanger for hats, coats or similar.



- Face fixing
- Internal use only

Available in Bag & TIMpac (fixings incl.):
125 x 19mm - SA

Hat & Coat Hook

Commonly fitted to doors or walls for hanging hats, coats or bathrobes.



Available in TIMpac (fixings incl.) & Bag (excl. fixings):
125 x 32mm - PC SC PB

Tool Hooks

Durable anti-scratch PVC coating. Can be fitted to pre-drilled timber or to masonry in a pre-drilled hole and with plastic plug.



Available in TIMpac- Pairs & Plugs:
100mm

Handy Hooks

Durable anti-scratch PVC coating. Can be fitted to pre-drilled timber or to masonry in a pre-drilled hole and with plastic plug.



Available in TIMpac- Pairs & Plugs:
150mm

Utility Hooks

Durable anti-scratch PVC coating. Can be fitted to pre-drilled timber or to masonry in a pre-drilled hole and with plastic plug.



Available in TIMpac- Pairs & Plugs:
150mm

Ladder Hooks

Durable anti-scratch PVC coating. Can be fitted to pre-drilled timber or to masonry in a pre-drilled hole and with plastic plug.



Available in TIMpac- Pairs & Plugs:
270mm

Furniture Fixings

Modesty Block

A single piece block for joint fixing of cabinet panels or similar at 90°.

- Screw Hole Ø - 4.8mm



Available in TIMbag & TIMpac (excl. fixings):
34 x 13 x 13mm - (W) (B)

Dual Direction Panel Connector

Two piece clip used for flush semi-permanent fixing of panels or dummy drawer fronts. The dual direction design allows fixing onto the base by clipping straight on or at a right angle.

- Screw Hole Ø - 3.5mm



Available in TIMpac (excl. fixings):
(B&W)

Knock Down Block

Used for the assembly of boards at 90°. Secured with a bolt into the thread of the second block which draws the two fittings together.

- Screw Hole Ø - 4.9mm



Available in TIMpac (excl. fixings):
35 x 25 x 12mm - (W) (B)

Rigid Joint

Suitable for fixing boards together at right angles.

- Screw Hole Ø - 4.5mm



Available in TIMpac (excl. fixings):
32 x 17 x 17mm - (W)

Dummy Drawer Connector

Used for the semi-permanent fixing of dummy drawer fronts to kitchen carcasses. The design allows for some adjustment during fitting to ensure a flush finish.

- Screw Hole Ø - 3.5mm



Available in TIMpac (excl. fixings):
(G)

Hinge Hole Cover Cap

Designed to cover unwanted and unsightly holes in all types of kitchen, bedroom and bathroom furniture. To suit a standard 35mm diameter hinge hole.



Available in TIMbag:
Ø 35mm - (W)

Wooden Jointing Biscuit

Used for precise edge jointing of timber. The compressed beech wood expands when used with glue for a secure joint.

- Thickness - 4mm

Available in TIMbag: No.0, No.10, No.20

Bulk Box: No.0, No.10



Wooden Dowel

Used for accurate, reinforced timber and cabinet jointing. Tapered ends for easier application. Fluted shank for good glue distribution along the entire length and to eliminate trapped air.



Available in TIMbag:
6 x 30, 8 x 40, 10 x 40mm

TIMpac:
6 x 30, 6 x 40, 8 x 30, 8 x 40mm

Plastic Cabinet Connector Bolt

For joining cabinets and kitchen units together.

Available in TIMpac:
Length - 28mm



Worktop Connector

Provides a concealed and strong joint for worktops eliminating the need for surface mounted joining strips. Frequently used in pairs. Brackets require 35mm hole.



Available in Pack:
Ø - M6 x 150mm

Plates & Braces

Mending Plate



Available in TIMpac & Box:
75 x 16mm
100 x 16mm

Corner Plate



Available in TIMpac & Box:
50 x 50 x 13mm
75 x 75 x 16mm

Tee Plate



Available in TIMpac & Box:
76 x 16mm

Stretch Plate



Available in TIMpac & Box:
38 x 25 x 29mm

Angled Brace



Available in TIMpac & Box:
19 x 19 x 19mm

Corner Brace



Available in TIMpac & Box:
25 x 25 x 16mm
38 x 38 x 16mm
50 x 50 x 16mm
65 x 65 x 16mm
75 x 75 x 16mm
100 x 100 x 22mm

Architectural Window Accessories



Brighton Pattern Sash Fastener

A traditional threaded bolt fastener for securing wooden sash windows.

- Manufactured from solid brass
- Internal use with wooden sash windows
- Screw fixing



Available in Bag & TIMpac (fixings incl.):
57 x 22mm - **PB** **PC** **SC** **MB**

Fitch Pattern Sash Fastener

A traditional slide arm fastener for securing wooden sash windows.

- Manufactured from solid brass
- Internal use with wooden sash windows
- Screw fixing



Available in Bag & TIMpac (fixings incl.):
68 x 14mm - **PB** **PC** **SC** **MB**

Traditional Pattern Sash Lift

Use to aid lifting wooden sash windows open. Sleek hook shape for user comfort and easy grip to move the window with ease. Commonly fitted in pairs on larger windows for tandem lifting.

- Manufactured from solid brass
- Internal use with wooden sash windows
- Screw fixing



Available in Bag & TIMpac (fixings incl.):
52mm - **PB** **PC** **SC** **MB**

Hook & Mortice Plate Casement Fastener

Used for closing wooden casement windows without a gasket. Reversible to suit both left and right hand opening windows.

- Manufactured from solid brass
- Internal use with wooden casement windows
- Hook & plate fixing keeps included
- Reversible
- Non-locking fastener



Available in Bag & TIMpac (fixings incl.): 54 x 19mm - **PB** **PC** **SC**

Fanlight Catch

Used to fasten bottom hung casement windows. Loop allows for difficult to reach windows to be open and shut with a pole hook. Can also be used on loft hatches and sky lights.

- Manufactured from solid brass
- Internal use
- Sprung catch for easy locking



Available in Box & TIMpac (fixings incl.):
50 x 60mm - **PB** **PC** **SC**

Victorian Pattern Casement Stay

For use on wooden casement windows, allowing the window to be held open at different points.

- Manufactured from solid brass
- Internal use with wooden casement windows
- 2 location pins included
- Screw fixing



Available in Bag & TIMpac (fixings incl.):
240mm - **PB** **PC** **SC**

Window Rack Bolt

An ideal way to increase security on timber windows. Morticed into the window and operated by a spline/rack bolt key that throws the bolt into the frame.

- Each pack contains 2 bolts & 1 key



Available Spare Rack Bolt Keys - Pack of 2

Available in Bag (excl. fixings) & TIMpac (fixings incl.):
42mm - **EB** **PC** **SC** **W**

Casement Stay

Casement stays are used for securely holding wooden windows in an open position.

- For wooden casement windows
- Universal application (suitable for left or right opening windows)



Available in Bag & TIMpac (fixings incl.):
200mm - **SA**
254mm - **SA**

Curly Tail Casement Stay

Curly Tail casement stay for traditional wooden casement windows. Supplied with two pins.



Available in Bag (fixings incl.):
252mm - **ABL**

Casement Stay (900A)

Casement Stay 900A Pattern, suitable for traditional wooden casement windows.



Available in Bag (fixings incl.):
252mm - **EBL** **B**

Curly Tail Casement Fastener

Curly Tail casement fastener for traditional wooden casement windows.

Available in Bag (fixings incl.): Handles Length: 86mm - **ABL**



Product Codes

Size (mm) & Pg No.	Finish	Pack Type	Pack Qty	Product Code
5 Lever British Standard Sashlock				
66/45	EB	Box	1	675016
(Pg. 4)	SS	Box	1	675834
78/57	EB	Box	1	675548
(Pg. 4)	SS	Box	1	675952
5 Lever British Standard Deadlock				
66/45	EB	Box	1	675681
(Pg. 4)	SS	Box	1	675888
78/57	EB	Box	1	675725
(Pg. 4)	SS	Box	1	675040
Euro Profile Sashlock				
66/45	SN	Box	1	675020
(Pg. 5)				
78/56	SN	Box	1	675852
(Pg. 5)				
Euro Profile Deadlock				
66/45	SN	Box	1	675513
(Pg. 5)				
78/56	SN	Box	1	675955
(Pg. 5)				
3 Lever Sashlock				
65/45	EB	Box	1	675987
(Pg. 5)	SN	Box	1	675321
78/58	EB	Box	1	675456
(Pg. 5)	SN	Box	1	675014
3 Lever Deadlock				
65/45	EB	Box	1	675951
(Pg. 5)	SN	Box	1	675751
78/58	EB	Box	1	675357
(Pg. 5)	SN	Box	1	675943
Specialist 3 Lever Sashlock - Narrow Backset				
51/31	SN	Bag	1	675546
(Pg. 6)				
Specialist 3 Lever Sashlock - Extra Long Key				
65/45	SN	Bag	1	675267
(Pg. 6)				
Bathroom Lock				
65/45	EB	Box	1	675861
(Pg. 6)	SN	Box	1	675359
78/57	EB	Box	1	675248
(Pg. 6)	SN	Box	1	675222
5 Lever British Standard Sashlock Rebate Kit				
13	EB	Bag	1	675135
(Pg. 6)	SN	Bag	1	675759
3 Lever Sashlock Rebate Kit				
13	EB	Bag	1	675258
(Pg. 6)	SN	Bag	1	675369

Size (mm) & Pg No.	Finish	Pack Type	Pack Qty	Product Code
3 Lever Narrow Backset Sashlock Rebate Kit				
13 (Pg. 6)	SN	Bag	1	675010
Tubular Latch				
67/45 (Pg. 7)	EB	TIMpac	1	675303P
		Box	1	675303
	SN	TIMpac	1	675900P
		Box	1	675900
76/57 (Pg. 7)	EB	TIMpac	1	675555P
		Box	1	675555
	SN	TIMpac	1	675783P
		Box	1	675783
Economy Tubular Latch				
67/45 (Pg. 7)	EB	Box	1	675646
	N	Box	1	675460
79.5/57.5 (Pg. 7)	EB	Box	1	675001
	N	Box	1	675647
Architectural Tubular Latch				
64/45 (Pg. 7)	ES	TIMpac	1	675264P
		Box	1	675264
78/57 (Pg. 7)	ES	TIMpac	1	675815P
		Box	1	675815
103/82.5 (Pg. 7)	ES	TIMpac	1	675673P
		Box	1	675673
128/107.5 (Pg. 7)	ES	TIMpac	1	675015P
		Box	1	675015
Architectural Tubular Deadbolt				
65.5/45 (Pg. 7)	ES	TIMpac	1	675999P
		Box	1	675999
78/57 (Pg. 7)	ES	TIMpac	1	675606P
		Box	1	675606
103.5/82.5 (Pg. 7)	ES	TIMpac	1	675481P
		Box	1	675481
129/108 (Pg. 7)	ES	TIMpac	1	675198P
		Box	1	675198
Quick Fit Tubular Latch				
67/45 (Pg. 7)	N	TIMpac	1	200274P
		Bag	1	200274
76/57 (Pg. 7)	N	TIMpac	1	200268P
		Bag	1	200268
Quick Fit Round Deadbolt				
64/45 (Pg. 7)	N	TIMpac	1	200378P
		Bag	1	200378
76/57 (Pg. 7)	N	TIMpac	1	200418P
		Bag	1	200418
Traditional Nightlatches				
91 x 62 (Pg. 8)	C	Box	1	765999
	S	Box	1	765508

Size (mm) & Pg No.	Finish	Pack Type	Pack Qty	Product Code
Narrow Nightlatches				
68 x 73 (Pg. 8)	C	Box	1	765712
	S	Box	1	765695
Standard Nightlatches				
94 x 73 (Pg. 8)	C	Box	1	765327
	S	Box	1	765060
Push Button Digital Lock				
142 x 41 (Pg. 9)	PC	Box	1	200086
	SC	Box	1	200344
Rim Cylinder				
32 (Pg. 9)	C	Box	1	765677
	EB	Box	1	765433
Edleston Lever On Rose Door Pack				
49 x 113 (Pg. 10)	PC	Box	1 Pack	200403
	SC	Box	1 Pack	200352
	MB	Box	1 Pack	200080
Radmore Lever On Rose Door Pack				
49 x 106 (Pg. 10)	PC	Box	1 Pack	200699
	SC	Box	1 Pack	200544
	MB	Box	1 Pack	200836
Shavington Lever On Rose Door Pack				
49 x 117 (Pg. 10)	P/S	Box	1 Pack	200657
Edleston Lever On Rose Handles Only				
49 x 113 (Pg. 11)	PC	Blister	1 Pair	200559
	SC	Blister	1 Pair	200809
	MB	Blister	1 Pair	200751
	P/S	Blister	1 Pair	200010
Radmore Lever On Rose Handles Only				
49 x 106 (Pg. 11)	PC	Blister	1 Pair	200318
	SC	Blister	1 Pair	200507
	MB	Blister	1 Pair	200942
Shavington Lever On Rose Handles Only				
49 x 113 (Pg. 11)	MB	Blister	1 Pair	200100
	P/S	Blister	1 Pair	200006
Bathroom Thumb Turn & Release				
51 (Pg. 11)	PC	Blister	1	200117
	SC	Blister	1	200172
	MB	Blister	1	200850
	P/S	Blister	1	200334
Standard Profile Escutcheons				
51 (Pg. 11)	PC	Blister	2	200876
	SC	Blister	2	200573
	MB	Blister	2	200941
	P/S	Blister	2	200002
Euro Profile Escutcheons				
51 (Pg. 11)	PC	Blister	2	200050
	SC	Blister	2	200735
	MB	Blister	2	200880
	P/S	Blister	2	200421

Product Codes

Size (mm) & Pg No.	Finish	Pack Type	Pack Qty	Product Code
Victorian Scroll Latch Door Pack				
114 x 42 (Pg. 12)	PC	Blister	1 Pack	200627
		Box	1 Pack	200003
	SC	Blister	1 Pack	200723
		Box	1 Pack	200753
	MB	Blister	1 Pack	200009
		Box	1 Pack	200818
Victorian Scroll Latch Handles Only				
114 x 42 (Pg. 13)	PC	Blister	1 Pair	200520
	SC	Blister	1 Pair	200323
	MB	Blister	1 Pair	200785
Victorian Scroll Lock Handles Only				
152 x 42 (Pg. 13)	PC	Blister	1 Pair	200034
	SC	Blister	1 Pair	200748
	MB	Blister	1 Pair	200161
Victorian Scroll Bathroom Handles Only				
152 x 42 (Pg. 13)	PC	Blister	1 Pair	200962
	SC	Blister	1 Pair	200355
	MB	Blister	1 Pair	200788
Victorian Straight Latch Door Pack				
114 x 42 (Pg. 14)	PC	Blister	1 Pack	200085
		Box	1 Pack	200246
	SC	Blister	1 Pack	200041
		Box	1 Pack	200368
	MB	Blister	1 Pack	200638
		Box	1 Pack	200952
Victorian Straight Latch Handles Only				
114 x 42 (Pg. 15)	PC	Blister	1 Pair	200845
	SC	Blister	1 Pair	200102
	MB	Blister	1 Pair	200682
Victorian Straight Lock Handles Only				
152 x 42 (Pg. 15)	PC	Blister	1 Pair	200075
	SC	Blister	1 Pair	200927
	MB	Blister	1 Pair	200054
Victorian Straight Bathroom Handles Only				
152 x 43 (Pg. 15)	PC	Blister	1 Pair	200392
	SC	Blister	1 Pair	200639
	MB	Blister	1 Pair	200247
Contractors Lever Latch Door Pack				
100 (Pg. 16)	SA	Box	1 Pack	200235
Contractors 3 Lever Lock Door Pack				
100 (Pg. 16)	SA	Box	1 Pack	200967
Contractors Latch Handles				
103 x 40 (Pg. 17)	SA	Bag	1 Pair	200851BX
		Blister	1 Pair	200851
Contractors Bathroom Handles				
154 x 40 (Pg. 17)	SA	Bag	1 Pair	200146BX
		Blister	1 Pair	200146

Size (mm) & Pg No.	Finish	Pack Type	Pack Qty	Product Code
Contractors Lock Handles				
154x40 (Pg. 17)	SA	Bag	1 Pair	200304BX
		Blister	1 Pair	200304
Contractors Euro Profile Lock Handles				
155x40 (Pg. 17)	SA	Bag	1 Pair	200647BX
		Blister	1 Pair	200647
Contractors Lever On Rose Handles				
134 (Pg. 18)	SA	Box	1 Pair	200666
		Blister	1 Pair	200515
Contractors Bathroom Thumb Turn & Release On Rose Set				
54 (Pg. 18)	SA	Bag	1 Pair	725105BX
		TIMpac	1 Pair	725105
Narrow Style Lever Handles - Lock				
155x54 (Pg. 43)	ABL	Box	1 Pair	200966
Narrow Style Lever Handles - Latch				
155x54 (Pg. 43)	ABL	Box	1 Pair	200314
Narrow Style Lever Handles - Bathroom				
155x54 (Pg. 43)	ABL	Box	1 Pair	200787
Traditional Style Lever Handles - Lock				
155x54 (Pg. 43)	ABL	Box	1 Pair	200898
Traditional Lever Handles - Latch				
155x54 (Pg. 43)	ABL	Box	1 Pair	200232
Traditional Style Lever Handles - Bathroom				
155x54 (Pg. 43)	ABL	Box	1 Pair	200776
Fleur De Lys Ornate Lever Handles - Lock				
195x55 (Pg. 43)	ABL	Box	1 Pair	200420
Fleur De Lys Ornate Lever Handles - Latch				
195x55 (Pg. 43)	ABL	Box	1 Pair	200953
Fleur De Lys Ornate Lever Handles - Bathroom				
195x55 (Pg. 43)	ABL	Box	1 Pair	200007
Fleur De Lys Pull Handle				
100 (Pg. 19)	ABL	Bag	1	200131
162 (Pg. 19)	ABL	Bag	1	200761

Size (mm) & Pg No.	Finish	Pack Type	Pack Qty	Product Code
178 (Pg. 19)	PB	Bag	1	200563

Product Codes

Size (mm) & Pg No.	Finish	Pack Type	Pack Qty	Product Code
D Shaped Cabinet Handle				
100 (Pg. 23)	SA	Bag	1	725098BX
		TIMpac	1	725098
150 (Pg. 23)	SA	Bag	1	725102BX
		TIMpac	1	725098
Flush Pull				
89 (Pg. 23)	SA	Bag	1	725141BX
		TIMpac	1	725141
Traditional Pattern Sash Pull Handle				
100 (Pg. 23)	MB	Bag	1	949322
		TIMpac	1	949322P
	PB	Bag	1	949014
		TIMpac	1	949014P
	PC	Bag	1	949569
		TIMpac	1	949569P
	SC	Bag	1	949648
		TIMpac	1	949648P
	MB	Bag	1	949305
		TIMpac	1	949305P
160 (Pg. 23)	PB	Bag	1	949131
		TIMpac	1	949131P
	PC	Bag	1	949677
		TIMpac	1	949677P
	SC	Bag	1	949546
		TIMpac	1	949546P
Finger Plate				
305 x 76 (Pg. 23)	SA	Bag	1	725137BX
		TIMpac	1	725137
Finger Plate Pull				
305 x 76 (Pg. 23)	SA	Bag	1	725138BX
		TIMpac	1	725138
Finger Plate Push				
305 x 76 (Pg. 23)	SA	Bag	1	725139BX
		TIMpac	1	725139
Fire Door Keep Locked Sign				
(Pg. 23)	SA	Bag	1	725109BX
		TIMpac	1	725109
Fire Door Keep Shut Sign				
(Pg. 23)	SA	Bag	1	725135BX
		TIMpac	1	725135
Spring Door Closer				
120 (Pg. 24)	EW	Box	1	200798
Hinge Bolt				
48 (Pg. 24)	EB	TIMpac	2	200606P
		Bag	2	200606
	Z	TIMpac	2	200999P
		Bag	2	200999

Size (mm) & Pg No.	Finish	Pack Type	Pack Qty	Product Code
Door Rack Bolt				
60 (Pg.24)	EB	TIMpac	2	200020P
		Bag	2	200020
	PC	TIMpac	2	200951P
		Bag	2	200951
	SC	TIMpac	2	200789P
		Bag	2	200789
	W	TIMpac	2	200456P
		Bag	2	200456
Door Restrictor				
107 (Pg. 25)	EB	Bag	1	200741
	PC	Bag	1	200258
	SC	Bag	1	200963
Door Chain				
85 (Pg. 25)	EB	Bag	1	200357
	PC	Bag	1	200485
	SC	Bag	1	200654
Security Door Chain				
44 (Pg. 25)	EB	TIMpac	1	200987P
		Bag	1	200987
	PC	TIMpac	1	200015P
		Bag	1	200015
	SC	TIMpac	1	200471P
		Bag	1	200471
Cabin Hook				
75 (Pg. 25)	PB	TIMpac	1	200495P
		Bag	1	200495
	PC	TIMpac	1	200111P
		Bag	1	200111
	SC	TIMpac	1	200123P
		Bag	1	200123
100 (Pg. 25)	PB	TIMpac	1	200665P
		Bag	1	200665
	PC	TIMpac	1	200759P
		Bag	1	200759
	SC	TIMpac	1	200749P
		Bag	1	200749
150 (Pg. 25)	PB	TIMpac	1	200436P
		Bag	1	200436
	PC	TIMpac	1	200221P
		Bag	1	200221
	SC	TIMpac	1	200385P
		Bag	1	200385
Scroll Necked Bolt				
128 (Pg. 25)	ABL	Bag	1	200843

Size (mm) & Pg No.	Finish	Pack Type	Pack Qty	Product Code	
Straight Barrel Bolt					
50 x 25 (Pg. 25)	SA	TIMpac	1	725204	
		Bag	1	725204BX	
75 x 25 (Pg. 25)	SA	TIMpac	1	725205	
		Bag	1	725205BX	
	PB	TIMpac	1	200945P	
		Bag	1	200945	
	PC	TIMpac	1	200225P	
		Bag	1	200225	
	SC	TIMpac	1	200856P	
		Bag	1	200856	
	100 x 25 (Pg. 25)	SA	TIMpac	1	725217
			Bag	1	725217BX
PB		TIMpac	1	200328P	
		Bag	1	200328	
PC		TIMpac	1	200943P	
		Bag	1	200943	
SC		TIMpac	1	200379P	
		Bag	1	200379	
150 x 25 (Pg. 25)		SA	TIMpac	1	725217
			Bag	1	725217BX
	PB	TIMpac	1	200496P	
		Bag	1	200796	
	PC	TIMpac	1	200114P	
		Bag	1	200114	
	SC	TIMpac	1	200164P	
		Bag	1	200164	
	Necked Barrel Bolt				
	75 x 25 (Pg. 26)	SA	TIMpac	1	725224
Bag			1	725224BX	
PB		TIMpac	1	200764P	
		Bag	1	200764	
PC		TIMpac	1	200694P	
		Bag	1	200694	
100 x 25 (Pg. 26)	SC	TIMpac	1	200367P	
		Bag	1	200367	
	PB	TIMpac	1	200321P	
		Bag	1	200321	
	PC	TIMpac	1	200996P	
		Bag	1	200996	
150 x 25 (Pg. 26)	SC	TIMpac	1	200158P	
		Bag	1	200158	
	PB	TIMpac	1	200200P	
		Bag	1	200200	
	PC	TIMpac	1	200555P	
		Bag	1	200555	
	SC	TIMpac	1	200645P	
		Bag	1	200645	

Product Codes

Size (mm) & Pg No.	Finish	Pack Type	Pack Qty	Product Code
Contract Flat Section Bolt				
110 x 25 (Pg. 27)	PB	TIMpac	1	200336P
		Bag	1	200336
	PC	TIMpac	1	200779P
		Bag	1	200779
	SC	TIMpac	1	200522P
		Bag	1	200522
135 x 30 (Pg. 27)	PB	TIMpac	1	200852P
		Bag	1	200852
	PC	TIMpac	1	200633P
		Bag	1	200633
	SC	TIMpac	1	200176P
		Bag	1	200176
210 x 35 (Pg. 27)	PB	TIMpac	1	200136P
		Bag	1	200136
	PC	TIMpac	1	200364P
		Bag	1	200364
	SC	TIMpac	1	200961P
		Bag	1	200961
Lever Action Flush Bolt				
150 x 19 (Pg. 27)	PB	TIMpac	1	200393P
		Bag	1	200393
	PC	TIMpac	1	200195P
		Bag	1	200195
	SC	TIMpac	1	200285P
		Bag	1	200285
155 x 20 (Pg. 27)	SA	TIMpac	1	725140
		Bag	1	725140BX
200 x 19 (Pg. 27)	PB	TIMpac	1	200643P
		Bag	1	200643
	PC	TIMpac	1	200477P
		Bag	1	200477
	SC	TIMpac	1	200648P
		Bag	1	200648
Architectural Flat Section Bolt				
100 x 35 (Pg. 27)	PB	TIMpac	1	200236P
		Bag	1	200236
	PC	TIMpac	1	200777P
		Bag	1	200777
	SC	TIMpac	1	200464P
		Bag	1	200464
150 x 35 (Pg. 27)	PB	TIMpac	1	200369P
		Bag	1	200369
	PC	TIMpac	1	200625P
		Bag	1	200625
	SC	TIMpac	1	200222P
		Bag	1	200222

Size (mm) & Pg No.	Finish	Pack Type	Pack Qty	Product Code
210 x 35 (Pg. 27)	PB	TIMpac	1	200854P
		Bag	1	200854
	PC	TIMpac	1	200191P
		Bag	1	200191
	SC	TIMpac	1	200964P
		Bag	1	200964
Indicator Bolt				
66 (Pg. 27)	EB	TIMpac	1	200112P
		Bag	1	200112
	PC	TIMpac	1	200045P
		Bag	1	200045
	SC	TIMpac	1	200320P
		Bag	1	200320
Bathroom Indicator Bolt				
66 x 32 (Pg. 27)	SA	TIMpac	1	725170
		Bag	1	725170BX
Toilet Roll Holder				
135 x 80 (Pg. 34)	SA	TIMpac	1	725186
		Bag	1	725186BX
Intumescent Letterbox - Black Frame				
272 x 70 (Pg. 28)	SA	Box	1	487438
	PS	Box	1	487457
	PG	Box	1	487158
	SA	Box	1	487051
305 x 70 (Pg. 28)	PS	Box	1	487299
	PG	Box	1	487279
Intumescent Letterbox - Silver Frame				
272 x 70 (Pg. 28)	SA	Box	1	487009
305 x 70 (Pg. 28)	SA	Box	1	487382
Applique Drop Down Seal				
730 x 40 (Pg. 28)	SA	Box	1	487918
830 x 40 (Pg. 28)	SA	Box	1	487647
930 x 40 (Pg. 28)	SA	Box	1	487250
1030 x 40 (Pg. 28)	SA	Box	1	487333
Intumescent Pipe Collars				
75 x 60 (Pg. 29)	-	Bag	1	487864
95 x 60 (Pg. 29)	-	Bag	1	487566
130 x 60 (Pg. 29)	-	Bag	1	487090
195 x 60 (Pg. 29)	-	Bag	1	487444

Product Codes

Size (mm) & Pg No.	Finish	Pack Type	Pack Qty	Product Code	Size (mm) & Pg No.	Finish	Pack Type	Pack Qty	Product Code	
Grade 13 Ball Bearing Fire Door Hinges										
101 x 76 (Pg. 32)	EB	Blister	1 Pair	334777	102 x 76 (Pg. 33)	SN	Box	1 Pair	340101	
		Box	1 Pair	334027		EB	Box	1 Pair	340321	
		Blister	1 Pair	334843		PC	Box	1 Pair	340555	
	Box	1 Pair	334457	SC		Box	1 Pair	340670		
	PS	Blister	1 Pair	334052	Double Steel Washered Hinge					
		Box	1 Pair	334111	76 x 50 (Pg. 34)	PB	TiMpac Bag	1 Pair 1 Pair	234555P 234555	
	MB	Blister	1 Pair	334161		PC	TiMpac Bag	1 Pair 1 Pair	234731P 234731	
		Box	1 Pair	334308		SC	TiMpac Bag	1 Pair 1 Pair	234426P 234426	
	101 x 76 (Pg. 32)	EB	Blister	1.5 Pairs		334617	102 x 67 (Pg. 34)	PB	TiMpac Bag	1 Pair 1 Pair
			Box	1.5 Pairs	334006	PC		TiMpac Bag	1 Pair 1 Pair	234129P 234129
		PS	Blister	1.5 Pairs	334080	SC		TiMpac Bag	1 Pair 1 Pair	234684P 234684
			Box	1.5 Pairs	334444	Double SS Washered Hinge				
SS		Blister	1.5 Pairs	334903	76 x 50 (Pg. 34)	PC	Box	1 Pair	234381	
		Box	1.5 Pairs	334519		SC	Box	1 Pair	234635	
MB		Blister	1.5 Pairs	334741	102 x 67 (Pg. 34)	PC	Box	1 Pair	234412	
		Box	1.5 Pairs	334366	SC	Box	1 Pair	234951		
			Box	1.5 Pairs	334366	102 x 75 (Pg. 34)	PC	Box	1 Pair	234708
Grade 11 Ball Bearing Fire Door Hinges					SC	Box	1 Pair	234210		
101 x 76 (Pg. 32)		EB	TiMpac	1 Pair	334753P	Plain Bearing Flush Hinge				
			Box	1 Pair	334753	60 x 41 (Pg. 35)	PC	Bag	1 Pair	234606
	PC	TiMpac	1 Pair	334988P	SC		Bag	1 Pair	234432	
		Box	1 Pair	334988	75 x 50 (Pg. 35)	PB	Bag	1 Pair	234316	
	SC	TiMpac	1 Pair	334040P		PC	Bag	1 Pair	234553	
		Box	1 Pair	334040	SC	Bag	1 Pair	234797		
76 x 50 (Pg. 32)	SN	Box	1 Pair	334555	Flush Hinge					
	Grade 7 Ball Bearing Fire Door Hinges					38 x 28 (Pg. 35)	Z	TiMpac Bag	1 Pair 1 Pair	434451P 434451
	EB	TiMpac	1 Pair	334101P	EB		TiMpac Bag	1 Pair 1 Pair	434464P 434464	
		Box	1 Pair	334101		50 x 38.5 (Pg. 35)	Z	TiMpac Bag	1 Pair 1 Pair	434056P 434056
	PC	TiMpac	1 Pair	334159P	EB		TiMpac Bag	1 Pair 1 Pair	434872P 434872	
		Box	1 Pair	334159			W	TiMpac Bag	1 Pair 1 Pair	434915P 434915
	SC	TiMpac	1 Pair	334654P	63 x 37 (Pg. 35)			Z	TiMpac Bag	1 Pair 1 Pair
		Box	1 Pair	334654		EB	TiMpac Bag	1 Pair 1 Pair	434946P 434946	
	EBL	TiMpac	1 Pair	334321P	75 x 51 (Pg. 35)		Z	TiMpac Bag	1 Pair 1 Pair	434777P 434777
		Box	1 Pair	334321		EB	TiMpac Bag	1 Pair 1 Pair	434174P 434174	
	SN	Box	1 Pair	334789						
	Twin Ball Bearing Hinge - 201 SS									
76 x 51 (Pg. 33)	PS	Box	1 Pair	340999						
Twin Ball Bearing Hinge - Steel										
76 x 51 (Pg. 33)	SN	Box	1 Pair	340147						
	EB	Box	1 Pair	340843						
	AB	Box	1 Pair	340573						
	W	Box	1 Pair	340369						
	BL	Box	1 Pair	340258						

Size (mm) & Pg No.	Finish	Pack Type	Pack Qty	Product Code
Hurlinge - Fixed Pin (104)				
75 x 55 (Pg. 35)	Z	Bag	1 Pair	434457
	EB	Bag	1 Pair	434367
	PC	Bag	1 Pair	434202
101 x 66 (Pg. 35)	Z	Bag	1 Pair	434142
	EB	Bag	1 Pair	434819
	PC	Bag	1 Pair	434666
Hurlinge - Loose Pin (104Z)				
75 x 52 (Pg. 35)	Z	Bag	1 Pair	434002
	EB	Bag	1 Pair	434976
	PC	Bag	1 Pair	434641
100 x 66 (Pg. 35)	Z	TiMpac	1 Pair	434432P
		Bag	1 Pair	434432
	EB	TiMpac	1 Pair	434728P
		Bag	1 Pair	434728
	PC	Bag	1 Pair	434258
Strong Steel Butt Hinge (451)				
100 x 73 (Pg. 36)	Z	Bag	1 Pair	434569
Strong Security Hinge (451/S)				
100 x 72.5 (Pg. 36)	Z	Bag	1 Pair	434210
Narrow Uncranked Butt Hinge (5050)				
75 x 48 (Pg. 36)	S	Bag	1 Pair	434645
	Z	Bag	1 Pair	434015
100 x 58 (Pg. 36)	S	Bag	1 Pair	434324
	Z	Bag	1 Pair	434255
127 x 65 (Pg. 36)	S	Bag	1 Pair	434422
	Z	Bag	1 Pair	434149
150 x 75 (Pg. 36)	S	Bag	1 Pair	434119
	Z	Bag	1 Pair	434999
Cast Iron Butt Hinge (200)				
75 x 50 (Pg. 36)	S	Bag	1 Pair	434176
	BL	Bag	1 Pair	434905
102 x 60 (Pg. 36)	S	Bag	1 Pair	434444
	BL	Bag	1 Pair	434731
Fixed Pin Butt Hinge (1838)				
25 x 25 (Pg. 37)	Z	Bag	1 Pair	434364
	S	Bag	1 Pair	434005
	EB	Bag	1 Pair	434652
38 x 34 (Pg. 37)	Z	TiMpac	1 Pair	434364P
		TiMpac	1 Pair	434225P
	Z	Bag	1 Pair	434225
	S	Bag	1 Pair	434475
63 x 44 (Pg. 37)	EB	Bag	1 Pair	434587
	Z	TiMpac	1 Pair	434789P
	EB	Bag	1 Pair	434789
		Bag	1 Pair	434269

Product Codes

Size (mm) & Pg No.	Finish	Pack Type	Pack Qty	Product Code	
75 x 50 (Pg. 37)	Z	TiMpac	1 Pair	434831P	
		Bag	1 Pair	434831	
		Bulk Box	1 Pair	434886	
	S	TiMpac	1 Pair	434963P	
		Bag	1 Pair	434963	
	EB	TiMpac	1 Pair	434701P	
		Bag	1 Pair	434701	
	PC	TiMpac	1 Pair	434607P	
		Bag	1 Pair	434607	
	SC	Bag	1 Pair	434817	
		TiMpac	1 Pair	434329P	
	BL	Bag	1 Pair	434329	
90 x 60 (Pg. 37)		W	Bag	1 Pair	434099
	Z	Bag	1 Pair	434069	
	S	Bag	1 Pair	434841	
	EB	Bag	1 Pair	434456	
	Z	TiMpac	1 Pair	434158P	
		Bag	1 Pair	434158	
100 x 70 (Pg. 37)	S	TiMpac	1 Pair	434025P	
		Bag	1 Pair	434025	
	EB	TiMpac	1 Pair	434167P	
		Bag	1 Pair	434167	
	PC	TiMpac	1 Pair	434123P	
		Bag	1 Pair	434123	
	SC	Bag	1 Pair	434555	
		TiMpac	1 Pair	434401P	
	BL	Bag	1 Pair	434401	
		W	Bag	1 Pair	434303
Loose Pin Butt Hinge (1838)					
75 x 50 (Pg. 37)	Z	TiMpac	1 Pair	434642P	
		Bag	1 Pair	434642	
	EB	TiMpac	1 Pair	434659P	
		Bag	1 Pair	434659	
	PC	TiMpac	1 Pair	434435P	
		Bag	1 Pair	434435	
90 x 60 (Pg. 37)	SC	TiMpac	1 Pair	434006P	
		Bag	1 Pair	434006	
	W	Bag	1 Pair	434720	
		BL	Bag	1 Pair	434655
	Z	Bag	1 Pair	434317	
		EB	Bag	1 Pair	434208
	PC	Bag	1 Pair	434237	
		Z	Bag	1 Pair	434482
	100 x 71 (Pg. 37)	EB	Bag	1 Pair	434101
		PC	Bag	1 Pair	434118
SC		Bag	1 Pair	434520	
W		Bag	1 Pair	434498	
BL	Bag	1 Pair	434319		

Size (mm) & Pg No.	Finish	Pack Type	Pack Qty	Product Code
Rising Butt Hinge Left Hand (466)				
75 x 72 (Pg. 38)	Z	TiMpac	1 Pair	434910P
		Bag	1 Pair	434910
	EB	Bag	1 Pair	434483
		Z	Bag	1 Pair
100 x 86 (Pg. 38)	EB	Bag	1 Pair	434458
Rising Butt Hinge Right Hand (466)				
75 x 72 (Pg. 38)	Z	TiMpac	1 Pair	434349P
		Bag	1 Pair	434349
	EB	Bag	1 Pair	434639
		Z	Bag	1 Pair
100 x 86 (Pg. 8)	EB	Bag	1 Pair	434127
Lift Off Hinge Left Hand (457)				
75 x 62 (Pg. 39)	Z	Bag	1 Pair	434706
Lift Off Hinge Right Hand (457)				
75 x 62 (Pg. 38)	Z	Bag	1 Pair	434467
101 x 63 (Pg. 39)	Z	Bag	1 Pair	434307
Ball Bearing Stormproof Hinge (1951)				
64 x 55 (Pg. 39)	PB	Box	1 Pair	234584
		PC	Box	234236
		SC	Box	1 Pair
Stormproof Hinge (1951)				
63 x 58 (Pg. 39)	Z	TiMpac	1 Pair	434105P
		Bag	1 Pair	434105
	B	Bag	1 Pair	434077
		W	Bag	1 Pair
Backflap Hinge - Uncranked Knuckle (404)				
25 x 74 (Pg. 40)	S	Bag	1 Pair	434328
32 x 76 (Pg. 40)	Z	TiMpac	1 Pair	434846P
		Bag	1 Pair	434846
	S	Bag	1 Pair	434461
		TiMpac	1 Pair	434715P
38 x 87 (Pg. 40)	Z	Bag	1 Pair	434715
	S	Bag	1 Pair	434783
50 x 106 (Pg. 40)	Z	TiMpac	1 Pair	434843P
		Bag	1 Pair	434843
	S	Bag	1 Pair	434029
65 x 147 (Pg. 40)	Z	Bag	1 Pair	434554
75 x 167 (Pg. 40)	S	Bag	1 Pair	434164
		Z	Bag	1 Pair
	S	Bag	1 Pair	434322
Counter Flap Hinge				
100 x 40 (Pg. 40)	PB	Box	1 Pair	234999
		PC	Box	234807
		SC	Box	1 Pair

Size (mm) & Pg No.	Finish	Pack Type	Pack Qty	Product Code
Parliament Hinge				
102 x 100 (Pg. 40)	PB	Box	1 Pair	234813
	PC	Box	1 Pair	234337
	SC	Box	1 Pair	234002
102 x 125 (Pg. 40)	PB	Box	1 Pair	234297
	PC	Box	1 Pair	234919
	SC	Box	1 Pair	234500
102 x 150 (Pg. 40)	PB	Box	1 Pair	234460
	PC	Box	1 Pair	234364
	SC	Box	1 Pair	234222
Piano Hinge				
1800 x 25 (Pg. 40)	EB	Box	1 Pair	434181
	N	Box	1 Pair	434471
1800 x 32 (Pg. 40)	EB	Box	1 Pair	434248
1800 x 38 (Pg. 40)	N	Box	1 Pair	434067
	EB	Box	1 Pair	434563
1800 x 40 (Pg. 40)	N	Box	1 Pair	434911
Cabinet Hinge				
90° (Pg. 41)	N	TiMpac	2	204942P
		Bag	2	204942
Clip-On-Soft-Close Cabinet Hinge				
90° (Pg. 41)	N	TiMpac	2	204072P
		Bag	2	204072
170° (Pg. 41)	N	TiMpac	2	204379P
		Bag	2	204379
Butterfly Hinges				
70 x 48 (Pg. 41)	ABL	Bag	1 Pair	434474
Crown/Coronet Hinges				
317 x 107 (Pg. 41)	ABL	Bag	1	442875
Unequal Hinges				
105 x 86 (Pg. 41)	ABL	Bag	1 Pair	442523
Spear Hinges				
161 x 90 (Pg. 41)	ABL	Bag	1	442005
237 x 108 (Pg. 41)	ABL	Bag	1	442674
		Bag	1	442674
Letter Plate				
250 x 74 (Pg. 42)	PB	TiMpac	1	200896P
		Bag	1	200896
	PC	TiMpac	1	200351P
		Bag	1	200351
	SC	TiMpac	1	200021P
		Bag	1	200021
254 x 76 (Pg. 42)	SA	TiMpac	1	725979
		Bag	1	725979BX

Product Codes

Size (mm) & Pg No.	Finish	Pack Type	Pack Qty	Product Code
Letter Tidy				
302 x 86 (Pg. 42)	PB	TIMpac	1	200684P
		Box	1	200684
	PC	TIMpac	1	200595P
		Box	1	200595
	SC	TIMpac	1	200358P
		Box	1	200358
Door Numerals				
0 (Pg. 43)	PB	TIMpac	1	200022P
		Bag	1	200022
	PC	TIMpac	1	200641P
		Bag	1	200641
	SC	TIMpac	1	200119P
		Bag	1	200119
1 (Pg. 43)	PB	TIMpac	1	200535P
		Bag	1	200535
	PC	TIMpac	1	200151P
		Bag	1	200151
	SC	TIMpac	1	200280P
		Bag	1	200280
2 (Pg. 43)	PB	TIMpac	1	200057P
		Bag	1	200057
	PC	TIMpac	1	200081P
		Bag	1	200081
	SC	TIMpac	1	200411P
		Bag	1	200411
3 (Pg. 43)	PB	TIMpac	1	200574P
		Bag	1	200574
	PC	TIMpac	1	200047P
		Bag	1	200047
	SC	TIMpac	1	200457P
		Bag	1	200457
4 (Pg. 43)	PB	TIMpac	1	200011P
		Bag	1	200011
	PC	TIMpac	1	200255P
		Bag	1	200255
	SC	TIMpac	1	200366P
		Bag	1	200366
5 (Pg. 43)	PB	TIMpac	1	200101P
		Bag	1	200101
	PC	TIMpac	1	200422P
		Bag	1	200422
	SC	TIMpac	1	200097P
		Bag	1	200097
6 (Pg. 43)	PB	TIMpac	1	200106P
		Bag	1	200106
	PC	TIMpac	1	200051P
		Bag	1	200051
	SC	TIMpac	1	200504P
		Bag	1	200504

Size (mm) & Pg No.	Finish	Pack Type	Pack Qty	Product Code
7 (Pg. 43)	PB	TIMpac	1	200039P
		Bag	1	200039
	PC	TIMpac	1	200709P
		Bag	1	200709
	SC	TIMpac	1	200486P
		Bag	1	200486
8 (Pg. 43)	PB	TIMpac	1	200036P
		Bag	1	200036
	PC	TIMpac	1	200409P
		Bag	1	200409
	SC	TIMpac	1	200964P
		Bag	1	200964
9 (Pg. 43)	PB	TIMpac	1	200173P
		Bag	1	200173
	PC	TIMpac	1	200811P
		Bag	1	200811
	SC	TIMpac	1	200052P
		Bag	1	200052
Door Letters				
A (Pg. 43)	PB	TIMpac	1	200947P
		Bag	1	200947
	PC	TIMpac	1	200370P
		Bag	1	200370
	SC	TIMpac	1	200483P
		Bag	1	200483
B (Pg. 43)	PB	TIMpac	1	200113P
		Bag	1	200113
	PC	TIMpac	1	200353P
		Bag	1	200353
	SC	TIMpac	1	200059P
		Bag	1	200059
C (Pg. 43)	PB	TIMpac	1	200642P
		Bag	1	200642
	PC	TIMpac	1	200303P
		Bag	1	200303
	SC	TIMpac	1	200386P
		Bag	1	200386
Urn Pattern Door Knocker				
166 x 60 (Pg. 43)	PB	TIMpac	1	200968P
		Bag	1	200968
	PC	TIMpac	1	200658P
		Bag	1	200658
	SC	TIMpac	1	200356P
		Bag	1	200356
Traditional Door Bell Push				
80 x 31 (Pg. 43)	PB	TIMpac	1	200213P
		Bag	1	200213
	PC	TIMpac	1	200774P
		Bag	1	200774
	SC	TIMpac	1	200891P
		Bag	1	200891

Size (mm) & Pg No.	Finish	Pack Type	Pack Qty	Product Code
Centre Door Knob				
66 (Pg. 43)	PB	TIMpac	1	200954P
		Bag	1	200954
	PC	TIMpac	1	200067P
66 (Pg. 43)	PB	TIMpac	1	200954P
		Bag	1	200954
	PC	TIMpac	1	200067P
Door Viewer				
66 (Pg. 43)	PB	TIMpac	1	200279P
		Bag	1	200279
	PC	TIMpac	1	200198P
66 (Pg. 43)	PB	TIMpac	1	200279P
		Bag	1	200279
	PC	TIMpac	1	200198P
Euro Profile Self-Adhesive Round				
52 (Pg. 44)	PB	TIMpac	1	200116P
		Bag	1	200116
	PC	TIMpac	1	200940P
Pair of Traditional Pattern Escutcheons				
32 (Pg. 44)	PB	TIMpac	1	200484P
		Bag	1	200484
	PC	TIMpac	1	200061P
32 (Pg. 44)	PB	TIMpac	1	200484P
		Bag	1	200484
	PC	TIMpac	1	200061P
Cylinder Pull				
79 x 41 (Pg. 44)	PB	TIMpac	1	200895P
		Bag	1	200895
	PC	TIMpac	1	200206P
70 x 42 (Pg. 44)	PB	TIMpac	1	200781P
		Bag	1	200781
	PC	TIMpac	1	200781P
Cylinder Door Pulls - Euro				
70 x 42 (Pg. 44)	PB	TIMpac	1	725155
		Bag	1	725155BX
	PC	TIMpac	1	725158
Cylinder Door Pulls - Standard				
70 x 42 (Pg. 44)	PB	TIMpac	1	725158
		Bag	1	725158BX
	PC	TIMpac	1	725158

Product Codes

Size (mm) & Pg No.	Finish	Pack Type	Pack Qty	Product Code
Covered Escutcheon				
38 (Pg. 44)	PB	TIMpac	2	725059
		Bag	2	725059BX
	PC	TIMpac	1	200067P
Bales Catch				
20 (Pg. 45)	PB	TIMpac	2	BC19P
		Bag	50	BC19BG
	PC	TIMpac	1	200067P
Adjustable Roller Catch				
39 (Pg. 45)	PB	TIMpac	1	ARCBRASSP
		Bag	50	ARCBRASSBG
	PC	TIMpac	1	ARCNICKELP
39 (Pg. 45)	PB	TIMpac	1	ARCBRASSP
		Bag	50	ARCBRASSBG
	PC	TIMpac	1	ARCNICKELP
Magnetic Catch				
40 x 22 (Pg. 45)	PB	TIMpac	2	MC4P
		Bag	100	MC4BG
	PC	TIMpac	2	MC6P
58 x 22 (Pg. 45)	PB	TIMpac	2	MC6P
		Bag	100	MC6BG
	PC	TIMpac	2	MC6BG
Double Ball Catch				
43 (Pg. 45)	PB	TIMpac	2	DBC40CHROME
		Bag	50	DBC40CHROME
	PC	TIMpac	2	DBC40BRASS
43 (Pg. 45)	PB	TIMpac	2	DBC40BRASS
		Bag	50	DBC40BRASSBG
	PC	TIMpac	2	DBC50CHROME
50 (Pg. 45)	PB	TIMpac	2	DBC50CHROME
		Bag	50	DBC50CHROME
	PC	TIMpac	2	DBC50BRASS
50 (Pg. 45)	PB	TIMpac	2	DBC50BRASS
		Bag	50	DBC50BRASSBG
	PC	TIMpac	2	DBC50BRASS
Double Roller Catch				
28 x 32 (Pg. 45)	PB	TIMpac	2	DRP
		Bag	50	DRBG
	PC	TIMpac	2	DRP
Cupboard Catch				
38 x 56 x 30 (Pg. 45)	PB	TIMpac	1	204321P
		Bag	1	204321
	PC	TIMpac	1	204321
Small Cupboard Lock				
64 x 32 (Pg. 45)	PB	TIMpac	1	204672P
		Bag	1	204672
	PC	TIMpac	1	204672
Touch Latch				
77 x 35 x 20 (Pg. 45)	PB	TIMpac	1	204789P
		Bag	1	204789
	PC	TIMpac	1	204789
Projection Door Stop				
70 (Pg. 46)	PB	TIMpac	1	200624P
		Bag	1	200624
	PC	TIMpac	1	200888P
70 (Pg. 46)	PB	TIMpac	1	200888P
		Bag	1	200888
	PC	TIMpac	1	200302P
70 (Pg. 46)	PB	TIMpac	1	200302P
		Bag	1	200302
	PC	TIMpac	1	200302
Oval Door Stop				
47 (Pg. 46)	PB	TIMpac	1	200090P
		Bag	1	200090
	PC	TIMpac	1	200775P
47 (Pg. 46)	PB	TIMpac	1	200775P
		Bag	1	200775
	PC	TIMpac	1	200330P
47 (Pg. 46)	PB	TIMpac	1	200330P
		Bag	1	200330
	PC	TIMpac	1	200330

Size (mm) & Pg No.	Finish	Pack Type	Pack Qty	Product Code
Cylinder Door Stop				
41 (Pg. 46)	PC	TIMpac	1	200975P
		Bag	1	200975
	SC	TIMpac	1	200049P
		Bag	1	200049
	PB	TIMpac	1	200668P
		Bag	1	200668
Door Stop - Projection				
70 (Pg. 46)	SA	TIMpac	3	725180
		Bag	3	725180BX
Door Stop - Round				
38 (Pg. 46)	SA	TIMpac	3	725182
		Bag	3	725182BX
Door Stop - Oval				
200 (Pg. 46)	SA	TIMpac	1	725193
		Bag	1	725193BX
Spring Door Stop				
78 x 24 (Pg. 46)	EB	TIMpac	2	SSBRASSP
	N	TIMpac	2	SSNICKELP
PVC Door Wedge				
136 x 43 x 29 (Pg. 46)	-	TIMpac	1	DWEDGE
PVC Door Stop				
32 x 21 (Pg. 46)	W	TIMpac	1	DSWHITEP
	BL	TIMpac	1	DSBLACKP
Single Robe Hook				
47 x 19 (Pg. 47)	SA	TIMpac	2	725142
		Bag	2	725142BX
Hat & Coat Hooks				
125 x 19 (Pg. 47)	SA	TIMpac	2	725144
		Bag	5	725145
		Bag	2	725144BX
Single Robe Hook				
44 x 18 (Pg. 47)	PC	TIMpac	1	200994P
		Bag	1	200994
	SC	TIMpac	1	200347P
		Bag	1	200347
	PB	TIMpac	1	200064P
		Bag	1	200064
Double Robe Hook				
47 x 24 (Pg. 47)	PC	TIMpac	1	200611P
		Bag	1	200611
	SC	TIMpac	1	200207P
		Bag	1	200207
	PB	TIMpac	1	200808P
		Bag	1	200808
Tool Hooks				
100 (Pg. 47)	-	TIMpac	1	457968P
		Pairs	1	457968

Notes Page

[illegible]

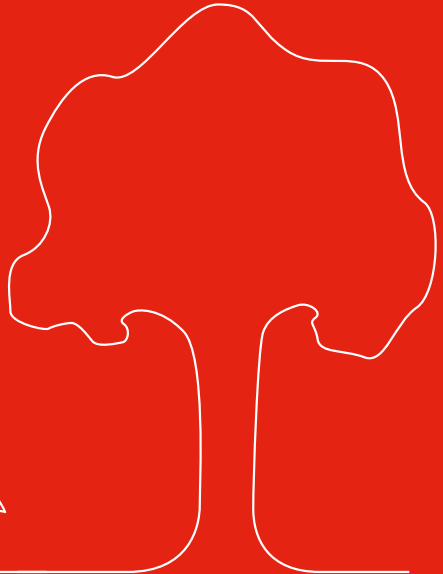
Size (mm) & Pg No.	Finish	Pack Type	Pack Qty	Product Code
Casement Stay				
200 (Pg. 51)	SA	TIMpac	1	725193
		Bag	1	725193BX
254 (Pg. 51)	SA	TIMpac	1	725198
		Bag	1	725198BX
Victorian Pattern Casement Stay				
240 (Pg. 51)	PB	TIMpac	1	949355P
		Bag	1	949355
	PC	TIMpac	1	949897P
		Bag	1	949897
	SC	TIMpac	1	949065P
		Bag	1	949065
Curly Tail Casement Stay				
252 (Pg. 51)	ABL	Bag	1	949002
Curly Tail Casement Stay (900A)				
252 (Pg. 51)	ABL	Bag	1	949437
	B	Bag	1	949855
Curly Tail Casement Stay Fastener				
86 (Pg. 51)	ABL	Bag	1	949946

Member of



Being a member of OPRL allows us to clearly mark the recyclability of our packaging. This allows consumers to identify and correctly recycle our packaging and print.

For example this brochure has the recycle label below.



UK

TIMCO House,
Green Lane, Wardle,
Nantwich, CW5 6BJ
Fax: 01829 261102
Fax: 01829 261093

sales@timco.co.uk
UK: **01829 261111**

timco.co.uk

Ireland

Old Train Station,
North Road,
Monaghan, H18 YK54
Fax: 04763539

sales@timco.ie
IRE: **04763538**
NI: **02890992305**

timco.ie